

Product datasheet for **AM50633PU-S**

RAB27A / RAB27 Mouse Monoclonal Antibody [Clone ID: AT2E2]

Product data:

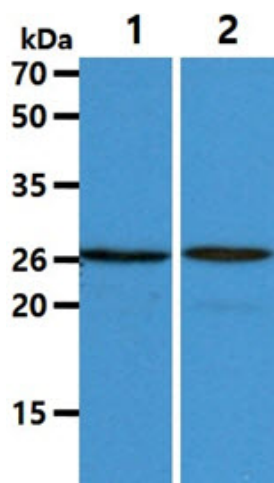
Product Type:	Primary Antibodies
Clone Name:	AT2E2
Applications:	ELISA, FC, WB
Recommended Dilution:	The antibody has been tested by ELISA, Western blot analysis and Flow cytometry to assure specificity and reactivity. Since application varies, however, each investigation should be titrated by the reagent to obtain optimal results. Recommended starting dilution for Western blot analysis is 1:1000
Reactivity:	Human
Host:	Mouse
Isotype:	IgG1
Clonality:	Monoclonal
Immunogen:	Recombinant human RAB27A (1-221 aa) purified from E. coli.
Formulation:	Liquid. In Phosphate-Buffered Saline (pH 7.4) with 0.02% Sodium Azide, 10% Glycerol. State: Purified State: Liquid purified Ig fraction
Concentration:	lot specific
Purification:	Protein-A affinity chromatography
Conjugation:	Unconjugated
Storage:	Store undiluted at 2-8°C for one month or (in aliquots) at -20°C for longer. Avoid repeated freezing and thawing.
Stability:	Shelf life: one year from despatch.
Gene Name:	RAB27A, member RAS oncogene family
Database Link:	Entrez Gene 5873 Human P51159
Background:	Ras-related protein Rab-27A (RAB27A) plays a role in cytotoxic granule exocytosis in lymphocytes. Required for both granule maturation and granule docking and priming at the immunologic sypse.
Synonyms:	RAB-27



[View online »](#)

Protein Families: Druggable Genome

Product images:



The Cell lysates (40ug) were resolved by SDS-PAGE, transferred to PVDF membrane and probed with anti-human RAB27A antibody (1:1000). Proteins were visualized using a goat anti-mouse secondary antibody conjugated to HRP and an ECL detection system. Lane 1. : THP-1 cell lysate Lane 2. : A549 cell lysate