

Product datasheet for **AM50630PU-S**

GNMT Mouse Monoclonal Antibody [Clone ID: AT5D1]

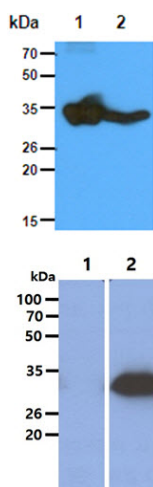
Product data:

Product Type:	Primary Antibodies
Clone Name:	AT5D1
Applications:	ELISA, IF, WB
Recommended Dilution:	The antibody has been tested by ELISA, Western blot analysis and ICC/IF to assure specificity and reactivity.
Reactivity:	Human
Host:	Mouse
Isotype:	IgG2a
Clonality:	Monoclonal
Immunogen:	Recombinant human GNMT (1-295aa) purified from E. coli.
Formulation:	Phosphate-Buffered Saline (pH 7.4) with 0.02% Sodium Azide, 10% Glycerol State: Purified State: Liquid purified Ig fraction
Concentration:	lot specific
Purification:	Affinity Chromatography on Protein A
Conjugation:	Unconjugated
Storage:	Store undiluted at 2-8°C for one month or (in aliquots) at -20°C for longer. Avoid repeated freezing and thawing.
Stability:	Shelf life: one year from despatch.
Gene Name:	glycine N-methyltransferase
Database Link:	Entrez Gene 27232 Human Q14749
Background:	Ras-related protein Glycine N-methyltransferase (GNMT) catalyzes the methylation of glycine by using S-adenosylmethionine (AdoMet) to form N-methylglycine (sarcosine) with the concomitant production of S-adenosylhomocysteine (AdoHcy). Possible crucial role in the regulation of tissue concentration of AdoMet and of metabolism of methionine.
Synonyms:	Glycine N-methyltransferase

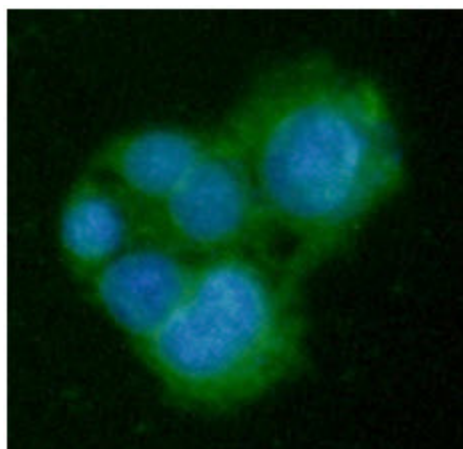
[View online »](#)

Protein Families: Druggable Genome
Protein Pathways: Glycine, serine and threonine metabolism

Product images:



The Recombinant protein (50ng) and Tissue lysates (40ug) were resolved by SDS-PAGE, transferred to PVDF membrane and probed with anti-human GNMT antibody (1:1000). Proteins were visualized using a goat anti-mouse secondary antibody conjugated to HRP and an ECL detection system. Lane 1. GNMT recombinant protein. Lane 2: Liver tissue lysate. The Cell lysates (10ug) were resolved by SDS-PAGE, transferred to PVDF membrane and probed with anti-human GNMT antibody (1:1000). Proteins were visualized using a goat anti-mouse secondary antibody conjugated to HRP and an ECL detection system. Lane 1: 293T cell lysate, Lane 2: GNMT Transfected 293T cell lysate.



ICC/IF analysis of GNMT in HepG2 cells line, stained with DAPI (Blue) for nucleus staining and monoclonal anti-human GNMT antibody (1:100) with goat anti-mouse IgG-Alexa fluor 488 conjugate (Green).