

## Product datasheet for **AM50627PU-S**

### **CAPNS1 Mouse Monoclonal Antibody [Clone ID: AT1D11]**

#### **Product data:**

<b>Product Type:</b>	Primary Antibodies
<b>Clone Name:</b>	AT1D11
<b>Applications:</b>	ELISA, FC, IF, WB
<b>Recommended Dilution:</b>	The antibody has been tested by ELISA, Western blot analysis, ICC/IF and Flow cytometry to assure specificity and reactivity. Since application varies, however, each investigation should be titrated by the reagent to obtain optimal results.
<b>Reactivity:</b>	Human
<b>Host:</b>	Mouse
<b>Isotype:</b>	IgG1
<b>Clonality:</b>	Monoclonal
<b>Immunogen:</b>	Recombinant human CAPNS1 (84-268aa) purified from E. coli.
<b>Formulation:</b>	Liquid. In Phosphate-Buffered Saline (pH 7.4) with 0.02% Sodium Azide, 10% Glycerol. State: Purified State: Liquid purified Ig fraction
<b>Concentration:</b>	lot specific
<b>Purification:</b>	Protein-A affinity chromatography
<b>Conjugation:</b>	Unconjugated
<b>Storage:</b>	Store undiluted at 2-8°C for one month or (in aliquots) at -20°C for longer. Avoid repeated freezing and thawing.
<b>Stability:</b>	Shelf life: one year from despatch.
<b>Gene Name:</b>	calpain small subunit 1
<b>Database Link:</b>	<a href="#">Entrez Gene 826 Human P04632</a>



[View online »](#)

**Background:**

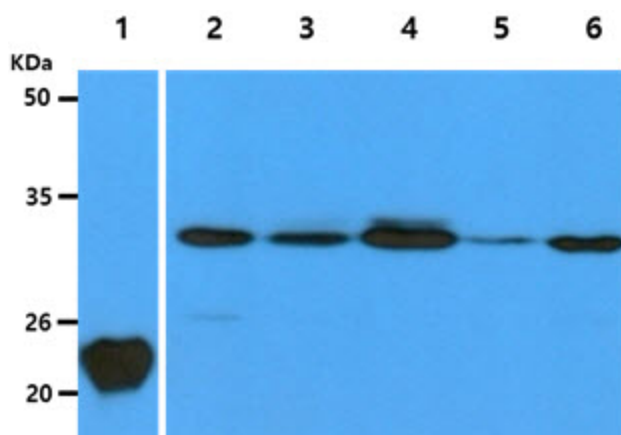
CAPNS1, also known as Calpain small subunit 1, are a ubiquitous, well-conserved family of calcium-dependent, cysteine proteases. Calpain families have been implicated in neurodegenerative processes, as their activation can be triggered by calcium influx and oxidative stress. Calpain I and II are heterodimeric with distinct large subunits associated with common small subunits, all of which are encoded by different genes. Two transcript variants encoding the same protein have been identified for this gene.

**Synonyms:**

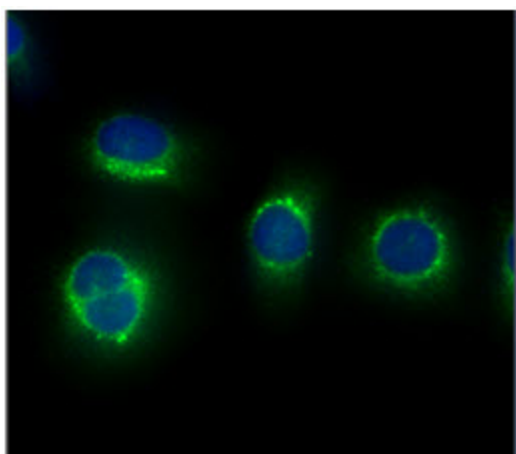
Calpain small subunit 1, CSS1, CAPN4, CAPNS

**Protein Families:**

Druggable Genome, Protease

**Product images:**

The recombinant human CAPNS1 (50ng) and Cell lysates (40ug) were resolved by SDS-PAGE, transferred to PVDF membrane and probed with anti-human CAPNS1 antibody (1:1000). Proteins were visualized using a goat anti-mouse secondary antibody conjugated to HRP and an ECL detection system. Lane 1.: CAPNS1 Recombinant protein Lane 2.: HeLa cell lysate Lane 3.: A431 cell lysate Lane 4.: 293T cell lysate Lane 5.: Balb/3T3 cell lysate Lane 6.: U87MG cell lysate



ICC/IF analysis of CAPNS1 in HeLa cells line, stained with DAPI (Blue) for nucleus staining and monoclonal anti-human CAPNS1 antibody (1:100) with goat anti-mouse IgG-Alexa fluor 488 conjugate (Green).