

Product datasheet for **AM50626PU-S**

Fumarase Mouse Monoclonal Antibody [Clone ID: AT3F6]

Product data:

Product Type:	Primary Antibodies
Clone Name:	AT3F6
Applications:	ELISA, WB
Recommended Dilution:	The antibody has been tested by ELISA and Western blot analysis to assure specificity and reactivity. Since application varies, however, each investigation should be titrated by the reagent to obtain optimal results.
Reactivity:	Human
Host:	Mouse
Isotype:	IgG2a
Clonality:	Monoclonal
Immunogen:	Recombinant human Fumarase (44-510aa) purified from E. coli.
Formulation:	Liquid. In Phosphate-Buffered Saline (pH 7.4) with 0.02% Sodium Azide, 10% Glycerol. State: Purified State: Liquid purified Ig fraction
Concentration:	lot specific
Purification:	Protein-A affinity chromatography
Conjugation:	Unconjugated
Storage:	Store undiluted at 2-8°C for one month or (in aliquots) at -20°C for longer. Avoid repeated freezing and thawing.
Stability:	Shelf life: one year from despatch.
Gene Name:	fumarate hydratase
Database Link:	Entrez Gene 2271 Human P07954



[View online »](#)

Background:

Fumarase (Fumarate hydratase) is an enzyme that catalyzes the reversible hydration/dehydration of fumarate to S-malate and is involved in the tricarboxylic acid (TCA), or Krebs cycle. This enzyme exists in both a cytosolic form and an N-terminal extended mitochondrial form. The N-terminal extended form is targeted to the mitochondrion, where the removal of the extension is the same form as in the cytoplasm. Fumarase deficiency can lead to progressive encephalopathy, cerebral atrophy and developmental delay and this enzyme also is thought to act as a tumor suppressor.

Synonyms:

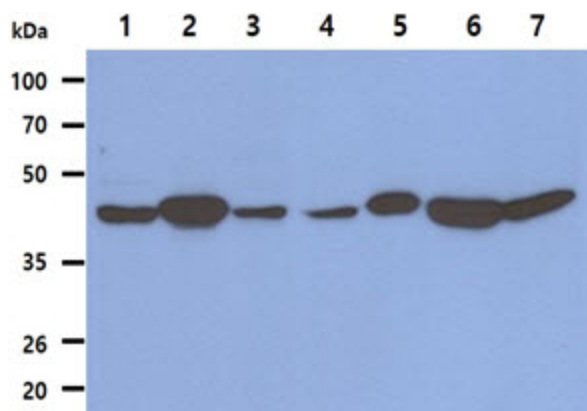
HLRCC, LRCC, MCL, MCUL1

Protein Families:

Druggable Genome

Protein Pathways:

Citrate cycle (TCA cycle), Metabolic pathways, Pathways in cancer, Renal cell carcinoma

Product images:

The Cell lysates (40ug) were resolved by SDS-PAGE, transferred to PVDF membrane and probed with anti-human Fumarase antibody (1:1000). Proteins were visualized using a goat anti-mouse secondary antibody conjugated to HRP and an ECL detection system. Lane 1. : HeLa cell lysate Lane 2. : LNCap cell lysate Lane 3. : A549 cell lysate Lane 4. : HepG2 cell lysate Lane 5. : 293T cell lysate Lane 6. : K562 cell lysate Lane 7. : Jurkat cell lysate