

Product datasheet for **AM50625PU-S**

LDHB Mouse Monoclonal Antibody [Clone ID: AT14D7]

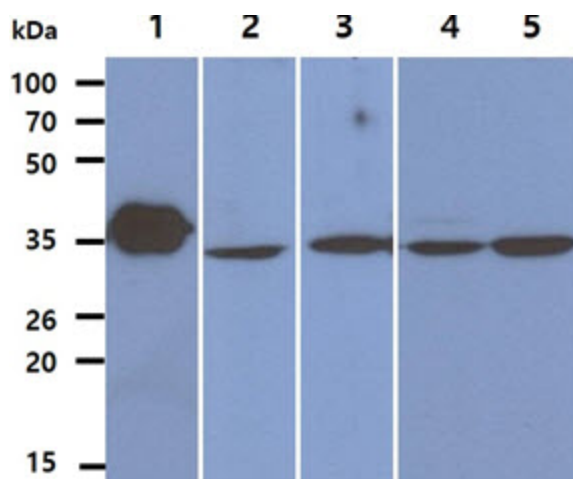
Product data:

| | |
|-----------------------|--|
| Product Type: | Primary Antibodies |
| Clone Name: | AT14D7 |
| Applications: | ELISA, WB |
| Recommended Dilution: | The antibody has been tested by ELISA and Western blot analysis to assure specificity and reactivity. Since application varies, however, each investigation should be titrated by the reagent to obtain optimal results. |
| Reactivity: | Human |
| Host: | Mouse |
| Isotype: | IgG2a |
| Clonality: | Monoclonal |
| Immunogen: | Recombinant human LDHB (1-334aa) purified from E. coli. |
| Formulation: | Liquid. In Phosphate-Buffered Saline (pH 7.4) with 0.02% Sodium Azide, 10% Glycerol. State: Purified State: Liquid purified Ig fraction |
| Concentration: | lot specific |
| Purification: | Protein-A affinity chromatography |
| Conjugation: | Unconjugated |
| Storage: | Store undiluted at 2-8°C for one month or (in aliquots) at -20°C for longer. Avoid repeated freezing and thawing. |
| Stability: | Shelf life: one year from despatch. |
| Gene Name: | lactate dehydrogenase B |
| Database Link: | Entrez Gene 3945 Human P07195 |

[View online »](#)

| | |
|--------------------------|---|
| Background: | LDHB, also known as L-lactate dehydrogenase B chain, is a member of the lactate dehydrogenase family. It is an oxidoreductase which catalyses the interconversion of pyruvate and lactate with concomitant interconversion of DH and D+. As this protein can also catalyze the oxidation of hydroxybutyrate, it is occasionally called Hydroxybutyrate Dehydrogenase (HBD). The LDH family consists of three members, LDH-A, LDH-B and LDH-C. LDHs function as powerful markers for germ cell tumors. |
| Synonyms: | LDHB, L-lactate dehydrogenase B chain, LDH-B, EC=1.1.1.27, LDH heart subunit, LDH-H, Renal carcinoma antigen NY-REN-46 |
| Protein Families: | Druggable Genome |
| Protein Pathways: | Cysteine and methionine metabolism, Glycolysis / Gluconeogenesis, Metabolic pathways, Propanoate metabolism, Pyruvate metabolism |

Product images:



The Recombinant Human LDHB (50ng) and Cell lysates (40ug) were resolved by SDS-PAGE, transferred to PVDF membrane and probed with anti-human LDHB antibody (1:1000). Proteins were visualized using a goat anti-mouse secondary antibody conjugated to HRP and an ECL detection system. Lane 1. : Recombinant LDHB protein Lane 2. : A549 cell lysate Lane 3. : 293T cell lysate Lane 4. : K562 cell lysate Lane 5. : Jurkat cell lysate