

## Product datasheet for **AM50622PU-N**

### Peroxiredoxin-6 / PRDX6 Mouse Monoclonal Antibody [Clone ID: AT22E7]

#### Product data:

Product Type:	Primary Antibodies
Clone Name:	AT22E7
Applications:	ELISA, FC, IF, WB
Recommended Dilution:	The antibody has been tested by ELISA, Western blot analysis, ICC/IF and Flow cytometry to assure specificity and reactivity. Since application varies, however, each investigation should be titrated by the reagent to obtain optimal results.
Reactivity:	Human
Host:	Mouse
Isotype:	IgG2a
Clonality:	Monoclonal
Immunogen:	Recombinant human PRDX6 (1-224aa) purified from E. coli.
Formulation:	Liquid. In Phosphate-Buffered Saline (pH 7.4) with 0.02% Sodium Azide, 10% Glycerol. State: Purified State: Liquid purified Ig fraction
Concentration:	lot specific
Purification:	Protein-A affinity chromatography
Conjugation:	Unconjugated
Storage:	Store undiluted at 2-8°C for one month or (in aliquots) at -20°C for longer. Avoid repeated freezing and thawing.
Stability:	Shelf life: one year from despatch.
Gene Name:	peroxiredoxin 6
Database Link:	<a href="#">Entrez Gene 9588 Human P30041</a>
Background:	Peroxiredoxin 6 is a member of the thiol-specific antioxidant protein family. This protein is a bifunctional enzyme with two distinct active sites. It is involved in redox regulation of the cell. It can reduce H <sub>2</sub> O <sub>2</sub> and short chain organic, fatty acid, and phospholipid hydroperoxides. It may play a role in the regulation of phospholipid turnover as well as in protection against oxidative injury.



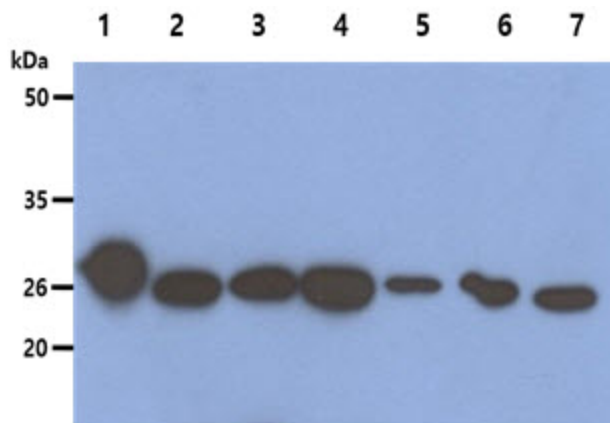
[View online »](#)

**Synonyms:** PRDX-6, Prx6, Prx-6, 1-Cys PRX, aiPLA2, NSGPx, AOP2, AOP-2, KIAA0106

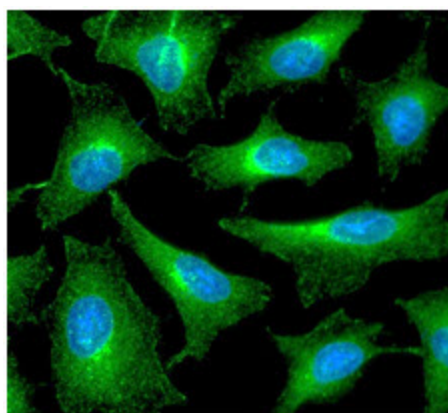
**Protein Families:** Druggable Genome

**Protein Pathways:** Metabolic pathways, Methane metabolism, Phenylalanine metabolism

### Product images:



The recombinant human PRDX6 protein (50ng), Cell and Mouse tissue lysates (40ug) were resolved by SDS-PAGE, transferred to PVDF membrane and probed with anti-human Peroxiredoxin 6 antibody (1:1000). Proteins were visualized using a goat anti-mouse secondary antibody conjugated to HRP and an ECL detection system. Lane 1.: Recombinant PRDX6 protein Lane 2.: HeLa cell lysate Lane 3.: 293T cell lysate Lane 4.: HepG2 cell lysate Lane 5.: U87MG cell lysate Lane 6.: Ramos cell lysate Lane 7.: Mouse brain lysate



ICC/IF analysis of PRDX6 in HeLa cells line, stained with DAPI (Blue) for nucleus staining and monoclonal anti-human PRDX6 antibody (1:100) with goat anti-mouse IgG-Alexa fluor 488 conjugate (Green).