

Product datasheet for **AM50621PU-N**

Fascin Mouse Monoclonal Antibody [Clone ID: AT13D2]

Product data:

Product Type:	Primary Antibodies
Clone Name:	AT13D2
Applications:	ELISA, FC, IF, WB
Recommended Dilution:	The antibody has been tested by ELISA, Western blot analysis, ICC/IF and Flow cytometry to assure specificity and reactivity. Since application varies, however, each investigation should be titrated by the reagent to obtain optimal results.
Reactivity:	Human
Host:	Mouse
Isotype:	IgG2b
Clonality:	Monoclonal
Immunogen:	Recombinant human FSCN1 (1-493aa) purified from E. coli.
Formulation:	Liquid. In Phosphate-Buffered Saline (pH 7.4) with 0.02% Sodium Azide, 10% Glycerol. State: Purified State: Liquid purified Ig fraction
Concentration:	lot specific
Purification:	Protein-A affinity chromatography
Conjugation:	Unconjugated
Storage:	Store undiluted at 2-8°C for one month or (in aliquots) at -20°C for longer. Avoid repeated freezing and thawing.
Stability:	Shelf life: one year from despatch.
Gene Name:	fascin actin-bundling protein 1
Database Link:	Entrez Gene 6624 Human Q16658



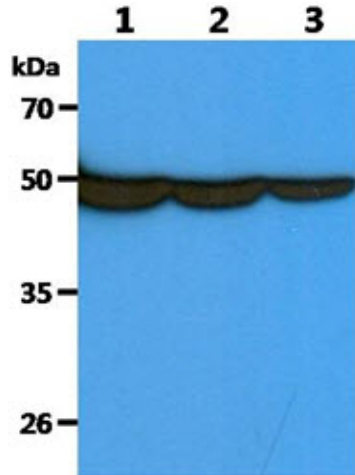
[View online »](#)

Background:

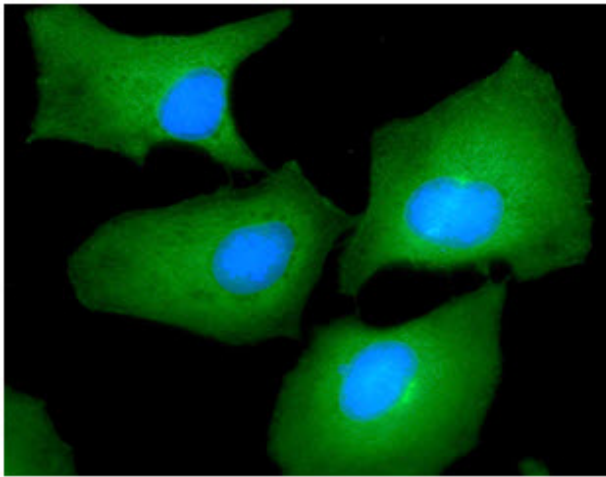
FSCN1 is an actin-bundling protein that provides rigidity to filopodial bundles to efficiently push the membrane forward during cytoskeleton remodeling and cell migration. Probably involved in the assembly of actin filament bundles present in microspikes, membrane ruffles, and stress fibers. And this protein is absent from most normal epithelia yet is upregulated in multiple forms of human carcinoma, where its expression correlates clinically with a poor prognosis. FSCN1 expression has been localized to neurons, glial cells, and endothelial cells.

Synonyms:

SCN1, FAN1, HSN, SNL, p55, Singed-like protein, Dendritic cell marker

Product images:


The Cell lysates (40ug) were resolved by SDS-PAGE, transferred to PVDF membrane and probed with anti-human FSCN1 antibody (1:1000). Proteins were visualized using a goat anti-mouse secondary antibody conjugated to HRP and an ECL detection system. Lane 1. : HeLa cell lysate Lane 2. : HepG2 cell lysate Lane 3. : THP-1 cell lysate



ICC/IF analysis of FSCN1 in HeLa cells line, stained with DAPI (Blue) for nucleus staining and monoclonal anti-human FSCN1 antibody (1:100) with goat anti-mouse IgG-Alexa fluor 488 conjugate (Green).