

Product datasheet for **AM50619PU-S**

BCAT1 Mouse Monoclonal Antibody [Clone ID: AT3C8]

Product data:

Product Type:	Primary Antibodies
Clone Name:	AT3C8
Applications:	ELISA, WB
Recommended Dilution:	The antibody has been tested by ELISA, Western blot analysis to assure specificity and reactivity. Since application varies, however, each investigation should be titrated by the reagent to obtain optimal results.
Reactivity:	Human
Host:	Mouse
Isotype:	IgG1
Clonality:	Monoclonal
Immunogen:	Recombinant human BCAT1 (1-386aa) purified from E. coli.
Formulation:	Liquid. In Phosphate-Buffered Saline (pH 7.4) with 0.02% Sodium Azide, 10% Glycerol. State: Purified State: Liquid purified Ig fraction
Concentration:	lot specific
Purification:	Protein-A affinity chromatography
Conjugation:	Unconjugated
Storage:	Store undiluted at 2-8°C for one month or (in aliquots) at -20°C for longer. Avoid repeated freezing and thawing.
Stability:	Shelf life: one year from despatch.
Gene Name:	branched chain amino acid transaminase 1
Database Link:	Entrez Gene 586 Human P54687



[View online »](#)

Background:

BCAT1, also known as branched chain amino-acid transaminase (cytosolic form), catalyzes the reversible transamination of branched-chain alpha-keto acids to branched-chain L-amino acids essential for cell growth. Two different clinical disorders have been attributed to a defect of branched-chain amino acid transamination: hypervalinemia and hyperleucine-isoleucinemia. BCAT1 is expressed in the brain and kidney. Overexpressed in MYC-induced tumors such as Burkitt's lymphoma.

Synonyms:

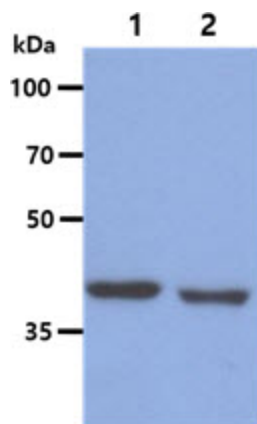
BCT1, ECA39, BCAT(c)

Protein Families:

Druggable Genome

Protein Pathways:

Metabolic pathways, Pantothenate and CoA biosynthesis, Valine, leucine and isoleucine biosynthesis, Valine, leucine and isoleucine degradation

Product images:

The Cell lysates (40ug) were resolved by SDS-PAGE, transferred to PVDF membrane and probed with anti-human BCAT1 antibody (1:1000). Proteins were visualized using a goat anti-mouse secondary antibody conjugated to HRP and an ECL detection system. Lane 1. : Jurkat cell lysate Lane 2. : HeLa cell lysate