

Product datasheet for **AM50617PU-N**

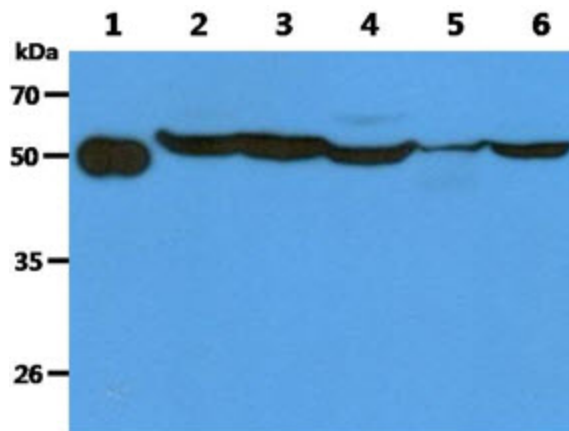
TBCEL Mouse Monoclonal Antibody [Clone ID: AT1B10]

Product data:

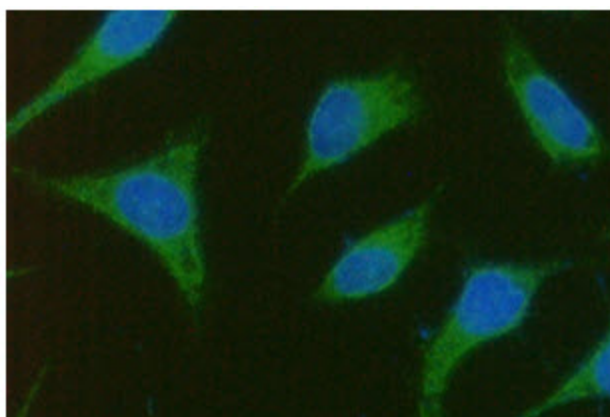
Product Type:	Primary Antibodies
Clone Name:	AT1B10
Applications:	ELISA, FC, IF, WB
Recommended Dilution:	The antibody has been tested by ELISA, Western blot analysis, ICC/IF and Flow cytometry to assure specificity and reactivity. Since application varies, however, each investigation should be titrated by the reagent to obtain optimal results.
Reactivity:	Human
Host:	Mouse
Clonality:	Monoclonal
Immunogen:	Recombinant human TBCEL (1-424aa) purified from E. coli.
Formulation:	Liquid. In Phosphate-Buffered Saline (pH 7.4) with 0.02% Sodium Azide, 10% Glycerol. State: Purified State: Liquid purified Ig fraction
Concentration:	lot specific
Purification:	Protein-A affinity chromatography
Conjugation:	Unconjugated
Storage:	Store undiluted at 2-8°C for one month or (in aliquots) at -20°C for longer. Avoid repeated freezing and thawing.
Stability:	Shelf life: one year from despatch.
Gene Name:	tubulin folding cofactor E-like
Database Link:	Entrez Gene 219899 Human Q5QJ74
Background:	Tubulin-specific chaperone cofactor E-like protein, also known as TBCEL, is a factor that regulates the microtubule cytoskeleton in determining cell behavior.
Synonyms:	Leucine-rich repeat-containing protein 35, Tubulin-specific chaperone cofactor E-like protein
Protein Families:	Druggable Genome



[View online »](#)

Product images:

The Recombinant Human TBCEL (50ng) and Cell lysates (40ug) were resolved by SDS-PAGE, transferred to PVDF membrane and probed with anti-human TBCEL antibody (1:1000). Proteins were visualized using a goat anti-mouse secondary antibody conjugated to HRP and an ECL detection system. Lane 1.: Recombinant Human TBCEL Lane 2.: PC3 cell lysate Lane 3.: LNCap cell lysate Lane 4 : 293T cell lysate Lane 5.: Mouse testis lysate Lane 6.: Mouse Kidney lysate



ICC/IF analysis of TBCEL in PC3 cells line, stained with DAPI (Blue) for nucleus staining and monoclonal anti-human TBCEL antibody (1:100) with goat anti-mouse IgG-Alexa fluor 488 conjugate (Green).