

Product datasheet for **AM50356PU-N**

BMP8B Mouse Monoclonal Antibody [Clone ID: AT13E6]

Product data:

Product Type:	Primary Antibodies
Clone Name:	AT13E6
Applications:	ELISA, WB
Recommended Dilution:	The antibody has been tested by ELISA, Western blot analysis to assure specificity and reactivity. Since application varies, however, each investigation should be titrated by the reagent to obtain optimal results. Recommended starting dilution is 1:1000.
Reactivity:	Human
Host:	Mouse
Isotype:	IgG2a
Clonality:	Monoclonal
Immunogen:	Recombinant human BMP8b (264-402aa) purified from E. coli.
Formulation:	PBS, pH 7.4 containing 0.02% Sodium Azide and 10% Glycerol State: Purified State: Liquid purified Ig fraction
Concentration:	lot specific
Purification:	Protein-A affinity chromatography
Conjugation:	Unconjugated
Storage:	Store undiluted at 2-8°C for up to two weeks or (in aliquots) at -20°C for longer. Avoid repeated freezing and thawing.
Stability:	Shelf life: one year from despatch.
Gene Name:	bone morphogenetic protein 8b
Database Link:	Entrez Gene 656 Human P34820



[View online »](#)

Background: Bone morphogenic proteins (BMPs) are members of the TGF beta superfamily. BMPs are involved in the induction of cartilage and bone formation. Induces cartilage and bone formation. May be the osteoinductive factor responsible for the phenomenon of epithelial osteogenesis. Plays a role in calcium regulation and bone homeostasis. BMP-8 is thought to be involved in early development, as detectable expression has not been found in adult organs. Two BMP-8 proteins exist, namely BMP-8A and BMP-8B (also designated OP-2), and are encoded by two distinct genes.

Synonyms: Bone morphogenetic protein 8B, BMP-8B, OP2, Osteogenic protein 2

Protein Families: Adult stem cells, Cancer stem cells, Druggable Genome, Embryonic stem cells, ES Cell Differentiation/IPS, Induced pluripotent stem cells, Secreted Protein, Stem cell relevant signaling - TGFb/BMP signaling pathway

Protein Pathways: Hedgehog signaling pathway, TGF-beta signaling pathway

Product images:

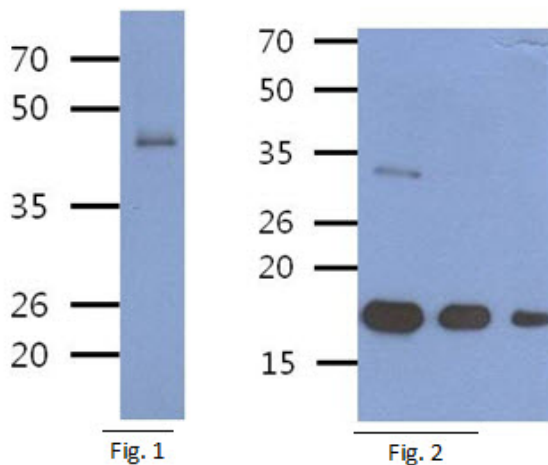


Fig. 1: The extract of A549 (40ug) were resolved by SDS-PAGE, transferred to PVDF membrane and probed with anti-human BMP8b antibody (1:500). Proteins were visualized using a goat anti-mouse secondary antibody conjugated to HRP and an ECL detection system. Fig. 2: The Human Recombinant protein BMP8b (200, 100, 50ng) were resolved by SDS-PAGE, transferred to PVDF membrane and probed with anti-human BMP8bq antibody (1:1000). Proteins were visualized using a goat anti-mouse secondary antibody conjugated to HRP and an ECL detection system.