

## Product datasheet for **AM50355PU-N**

### CD3E Mouse Monoclonal Antibody [Clone ID: AT3H3]

#### Product data:

Product Type:	Primary Antibodies
Clone Name:	AT3H3
Applications:	ELISA, WB
Recommended Dilution:	The antibody has been tested by ELISA, Western blot analysis to assure specificity and reactivity. Since application varies, however, each investigation should be titrated by the reagent to obtain optimal results. Recommended starting dilution is 1:1000.
Reactivity:	Human
Host:	Mouse
Isotype:	IgG1
Clonality:	Monoclonal
Immunogen:	Recombinant human CD3E (23-126aa) purified from E. coli.
Formulation:	PBS, pH 7.4 containing 0.02% Sodium Azide and 10% Glycerol State: Purified State: Liquid purified Ig fraction
Concentration:	lot specific
Purification:	Protein-A affinity chromatography
Conjugation:	Unconjugated
Storage:	Store undiluted at 2-8°C for up to two weeks or (in aliquots) at -20°C for longer. Avoid repeated freezing and thawing.
Stability:	Shelf life: one year from despatch.
Gene Name:	CD3e molecule
Database Link:	<a href="#">Entrez Gene 916 Human P07766</a>



[View online »](#)

**Background:**

The T cell antigen receptor (TCR) recognizes foreign antigens and translates such recognition events into intracellular signals that elicit a change in the cell from a dormant to an activated state. Much of this signaling process can be attributed to a multi subunit complex of proteins that associates directly with the TCR. This complex has been designated CD3 (cluster of differentiation 3). It is composed of five invariant polypeptide chains that associate to form three dimers. The epsilon polypeptide plays an essential role in T-cell development. Defects in this gene cause immunodeficiency. This gene has also been linked to a susceptibility to type I diabetes in women.

**Synonyms:**

T3/Leu-4

**Protein Families:**

Druggable Genome, Transmembrane

**Protein Pathways:**

Hematopoietic cell lineage, Primary immunodeficiency, T cell receptor signaling pathway

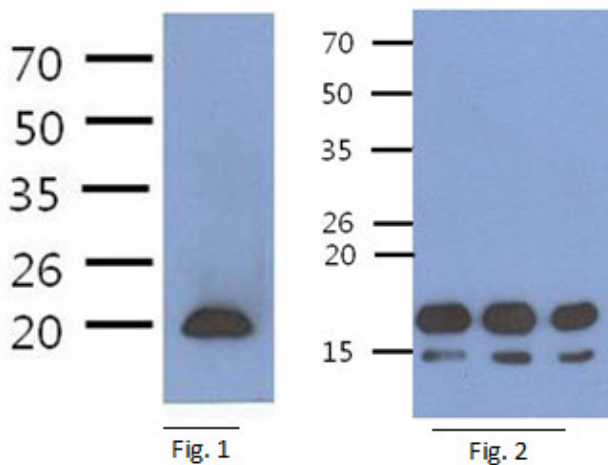
**Product images:**

Fig. 1: The extract of Jurkat (40ug) were resolved by SDS-PAGE, transferred to PVDF membrane and probed with anti-human CD3E antibody (1:1000). Proteins were visualized using a goat anti-mouse secondary antibody conjugated to HRP and an ECL detection system. Fig. 2: The Human Recombinant protein CD3E (200, 100, 50ng) were resolved by SDS-PAGE, transferred to PVDF membrane and probed with anti-human CD3E antibody (1:1000). Proteins were visualized using a goat anti-mouse secondary antibody conjugated to HRP and an ECL detection system.