

## Product datasheet for **AM50354PU-N**

### GC1q R (C1QBP) Mouse Monoclonal Antibody [Clone ID: AT1G7]

#### Product data:

Product Type:	Primary Antibodies
Clone Name:	AT1G7
Applications:	ELISA, WB
Recommended Dilution:	The antibody has been tested by ELISA, Western blot analysis to assure specificity and reactivity. Since application varies, however, each investigation should be titrated by the reagent to obtain optimal results. Recommended starting dilution is 1:2000.
Reactivity:	Human
Host:	Mouse
Isotype:	IgG1
Clonality:	Monoclonal
Immunogen:	Recombinant human C1QBP (74-282aa) purified from E.coli.
Formulation:	PBS, pH 7.4 containing 0.02% Sodium Azide and 10% Glycerol State: Purified State: Liquid purified Ig fraction
Concentration:	lot specific
Purification:	Protein-A affinity chromatography
Conjugation:	Unconjugated
Storage:	Store undiluted at 2-8°C for up to two weeks or (in aliquots) at -20°C for longer. Avoid repeated freezing and thawing.
Stability:	Shelf life: one year from despatch.
Gene Name:	complement component 1, q subcomponent binding protein
Database Link:	<a href="#">Entrez Gene 708 Human</a> <a href="#">Q07021</a>



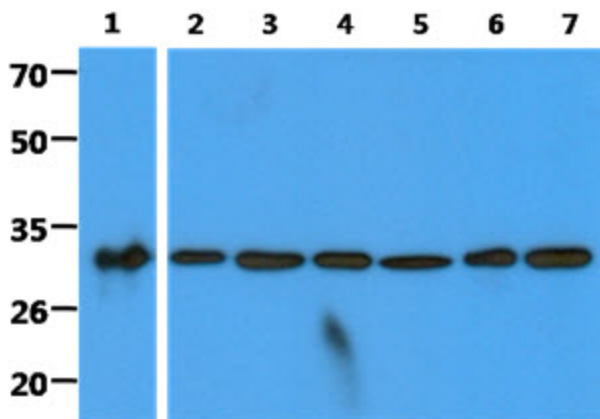
[View online »](#)

**Background:**

Complement component 1 Q subcomponent-binding protein, mitochondrial is a protein that in humans is encoded by the C1QBP gene. The human complement subcomponent C1q associates with C1r and C1s in order to yield the first component of the serum complement system. The protein encoded by this gene is known to bind to the globular heads of C1q molecules and inhibit C1 activation. This protein has also been identified as the p32 subunit of pre-mRNA splicing factor SF2, as well as a hyaluronic acid-binding protein.

**Synonyms:**

GC1QBP, HABP1, SF2P32, GC1q-R protein, p33, p32

**Product images:**

The recombinant protein (50ng) and cell lysates (40ug) were resolved by SDS-PAGE, transferred to PVDF membrane and probed with anti-human C1QBP antibody (1:2000). Proteins were visualized using a goat anti-mouse secondary antibody conjugated to HRP and an ECL detection system. Lane 1 : Recombinant protein Lane 2 : HeLa cell lysate Lane 3 : Jurkat cell lysate Lane 4 : MCF7 cell lysate Lane 5 : Ramos cell lysate Lane 6 : 293T cell lysate Lane 7 : A549 cell lysate