

Product datasheet for **AM50351PU-S**

RAIDD (CRADD) Mouse Monoclonal Antibody [Clone ID: AT14G8]

Product data:

Product Type:	Primary Antibodies
Clone Name:	AT14G8
Applications:	ELISA, WB
Recommended Dilution:	This antibody has been tested by ELISA, Western blot analysis to assure specificity and reactivity. Since application varies, however, each investigation should be titrated by the reagent to obtain optimal results. <i>Recommended Starting Dilution: 1/500.</i>
Reactivity:	Human
Host:	Mouse
Isotype:	IgG1
Clonality:	Monoclonal
Immunogen:	Recombinant Human CRADD (1-199aa) purified from <i>E. coli</i> .
Formulation:	PBS, pH 7.4 containing 0.02% Sodium Azide and 10% Glycerol State: Purified State: Liquid purified Ig fraction
Concentration:	lot specific
Purification:	Affinity Chromatography on Protein A
Conjugation:	Unconjugated
Storage:	Store undiluted at 2-8°C for up to two weeks or (in aliquots) at -20°C for longer. Avoid repeated freezing and thawing.
Stability:	Shelf life: one year from despatch.
Gene Name:	CASP2 and RIPK1 domain containing adaptor with death domain
Database Link:	Entrez Gene 1116 Human Entrez Gene 8738 Human P78560



[View online »](#)

Background:

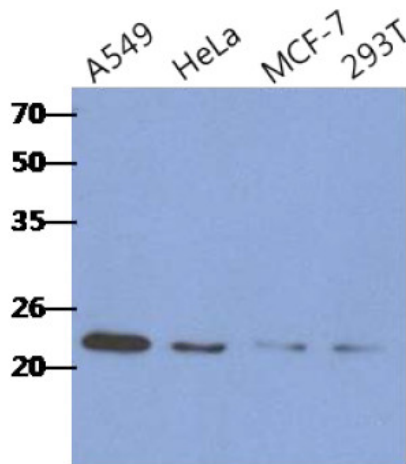
CRADD, also referred as RAIDD, is an adaptor protein that could interact with both caspase 2 and RIP that can promote apoptosis once activated. RAIDD (RIP-associated ICH-1/Ced-3 homologous protein with a death domain) has been identified as a RIP binding protein that also associates with members of the caspase family, providing a link between activation of the TNF-Rs and the triggering of the cysteine protease cascade. The amino-terminal domain of RAIDD shares significant homology with the prodomain of ICH-1 and mediates the binding of RAIDD to this cysteine protease.

Synonyms:

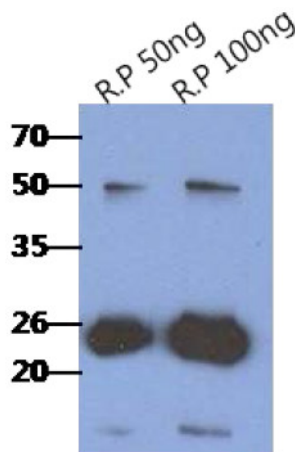
CRADD

Protein Families:

Secreted Protein

Product images:


Western blot analysis: The cell lysates of A549, HeLa, MCF-7 and 293T (40ug) were resolved by SDS-PAGE, transferred to PVDF membrane and probed with anti-human CRADD antibody (1/500). Proteins were visualized using a goat anti-mouse secondary antibody conjugated to HRP and an ECL detection system.



Western blot analysis: The Recombinant Human CRADD (50, 100ng) were resolved by SDS-PAGE, transferred to PVDF membrane and probed with anti-human CRADD antibody (1/1000). Proteins were visualized using a goat anti-mouse secondary antibody conjugated to HRP and an ECL detection system.