

## Product datasheet for **AM50348PU-S**

### CD64 (FCGR1A) Mouse Monoclonal Antibody [Clone ID: AT37F7]

#### Product data:

|                       |  |
|-----------------------|--|
| Product Type:         | Primary Antibodies   |
| Clone Name:           | AT37F7   |
| Applications:         | ELISA, WB  |
| Recommended Dilution: | The antibody has been tested by ELISA, Western blot analysis to assure specificity and reactivity. Since application varies, however, each investigation should be titrated by the reagent to obtain optimal results. Recommended starting dilution is 1:2000. |
| Reactivity:           | Human  |
| Host:                 | Mouse  |
| Isotype:              | IgG2b  |
| Clonality:            | Monoclonal   |
| Immunogen:            | Recombinant human FCGR1A (16-292aa) purified from E.coli.  |
| Formulation:          | PBS, pH 7.4 containing 0.02% Sodium Azide and 10% Glycerol<br>State: Purified<br>State: Liquid purified Ig fraction  |
| Concentration:        | lot specific   |
| Purification:         | Protein-A affinity chromatography  |
| Conjugation:          | Unconjugated   |
| Storage:              | Store undiluted at 2-8°C for up to two weeks or (in aliquots) at -20°C for longer.<br>Avoid repeated freezing and thawing.   |
| Stability:            | Shelf life: one year from despatch.  |
| Gene Name:            | Fc fragment of IgG receptor Ia   |
| Database Link:        | <a href="#">Entrez Gene 2209 Human P12314</a>  |



[View online »](#)

**Background:**

High affinity immunoglobulin gamma Fc receptor I (FCGR1A) is a protein that in humans is encoded by the FCGR1A gene. Also, This protein is known as CD64, belongs to the immunoglobulin superfamily. It is a high-affinity Fc-gamma receptor. They are playing a role in both innate and adaptive immune responses. They have been shown to interact with FCAR. The FcγRI binds the Fc portion of IgG and causes activation of the host cell via an intercellular ITAM motif.

**Synonyms:**

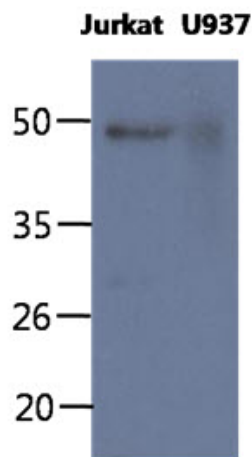
IgG Fc receptor I, FcγRIa, FcRI, Fc-gamma RI, Fc-gamma RIA

**Protein Families:**

Transmembrane

**Protein Pathways:**

Fc gamma R-mediated phagocytosis, Hematopoietic cell lineage, Systemic lupus erythematosus

**Product images:**

The cell lysates of Jurkat and U937 (40ug) were resolved by SDS-PAGE, transferred to PVDF membrane and probed with anti-human FCGR1A antibody (1:2000). Proteins were visualized using a goat anti-mouse secondary antibody conjugated to HRP and an ECL detection system.