

Product datasheet for **AM50345PU-N**

LRPAP1 Mouse Monoclonal Antibody [Clone ID: AT8G8]

Product data:

Product Type:	Primary Antibodies
Clone Name:	AT8G8
Applications:	ELISA, WB
Recommended Dilution:	The antibody has been tested by ELISA, Western blot analysis to assure specificity and reactivity. Since application varies, however, each investigation should be titrated by the reagent to obtain optimal results. Recommended starting dilution is 1:500.
Reactivity:	Human
Host:	Mouse
Isotype:	IgG1
Clonality:	Monoclonal
Immunogen:	Recombinant human LRPAP1 (35-357aa) purified from E. coli.
Formulation:	PBS, pH 7.4 containing 0.02% Sodium Azide and 10% Glycerol State: Purified State: Liquid purified Ig fraction
Concentration:	lot specific
Purification:	Protein-A affinity chromatography
Conjugation:	Unconjugated
Storage:	Store undiluted at 2-8°C for up to two weeks or (in aliquots) at -20°C for longer. Avoid repeated freezing and thawing.
Stability:	Shelf life: one year from despatch.
Gene Name:	LDL receptor related protein associated protein 1
Database Link:	Entrez Gene 4043 Human P30533

[View online »](#)

Background:

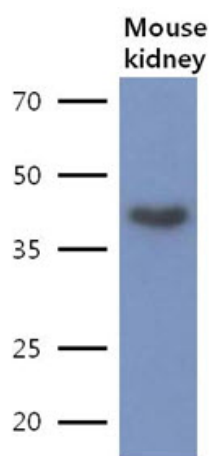
Alpha-2-macroglobulin receptor-associated protein, also known as low density lipoprotein receptor-related protein-associated protein 1, RAP and LRPAP1, is a 39 kDa protein and a member of the alpha-2-MRAP family. LRPAP1 is a receptor antagonist that interacts with several members of the low density lipoprotein (LDL) receptor gene family. Upon binding to these receptors, LRPAP1 inhibits all ligand interactions with the receptors. LRPAP1 is present on cell surface forming a complex with the alpha-2-macroglobulin receptor heavy and light chains. LRPAP1 is present on the cell surface, where it is an effective inhibitor of ligand binding to the kidney glycoprotein 330 (gp330) yet it is most abundant in the endoplasmic reticulum lumen and may function in receptor folding and/or trafficking.

Synonyms:

Alpha-2-MRAP, RAP

Protein Families:

Druggable Genome, Transmembrane

Product images:


The lysate of Mouse kidney (40ug) were resolved by SDS-PAGE, transferred to PVDF membrane and probed with anti-human LRPAP1 antibody (1:500). Proteins were visualized using a goat anti-mouse secondary antibody conjugated to HRP and an ECL detection system.