

## Product datasheet for **AM50339PU-N**

### ASF1B Mouse Monoclonal Antibody [Clone ID: AT1D4]

#### Product data:

Product Type:	Primary Antibodies
Clone Name:	AT1D4
Applications:	ELISA, WB
Recommended Dilution:	The antibody has been tested by ELISA, Western blot analysis to assure specificity and reactivity. Since application varies, however, each investigation should be titrated by the reagent to obtain optimal results. Recommended starting dilution is 1:1000
Reactivity:	Human
Host:	Mouse
Isotype:	IgG2b
Clonality:	Monoclonal
Immunogen:	Recombinant human ASF1B (1-202aa) purified from E. coli.
Specificity:	Recognizes Human ASF1B. Other species not tested.
Formulation:	PBS, pH 7.4 containing 0.02% Sodium Azide and 10% Glycerol State: Purified State: Liquid purified Ig fraction
Concentration:	lot specific
Purification:	Protein-A affinity chromatography
Conjugation:	Unconjugated
Storage:	Store undiluted at 2-8°C for up to two weeks or (in aliquots) at -20°C for longer. Avoid repeated freezing and thawing.
Stability:	Shelf life: one year from despatch.
Gene Name:	anti-silencing function 1B histone chaperone
Database Link:	<a href="#">Entrez Gene 55723 Human Q9NVP2</a>



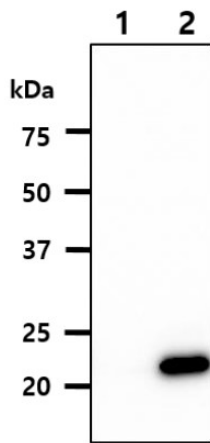
[View online »](#)

**Background:**

ASF1B is a member of the H3/H4 family of histone chaperone proteins and is similar to the anti-silencing function-1 gene in yeast. The encoded protein is the substrate of the tousled-like kinase family of cell cycle-regulated kinases, and may play a key role in modulating the nucleosome structure of chromatin by ensuring a constant supply of histones at sites of nucleosome assembly. Delivering histone H3/H4 dimers to CAF-1 or HIRA histone deposition complexes to facilitate replication-coupled and replication-independent nucleosome assembly on DNA. Both ASF1A and ASF1B are phosphorylated in S phase by the Tousled-like kinases TLK1 and TLK2, and are dephosphorylated when TLK1 and TLK2 are inactivated by Chk1 kinase in response to replicative stress.

**Synonyms:**

CCG1-interacting factor A-II, CIA-II

**Product images:**

**Western Blot Analysis:** The cell lysates (10ug) were resolved by SDS-PAGE, transferred to PVDF membrane and probed with anti-human ASF1B antibody (1:1000). Proteins were visualized using a goat anti-mouse secondary antibody conjugated to HRP and an ECL detection system. Lane 1.: 293T cell lysate Lane 2.: ASF1B transfected 293T cell lysate