

Product datasheet for **AM50303PU-S**

Ornithine Decarboxylase (ODC1) Mouse Monoclonal Antibody [Clone ID: ODC1/485]

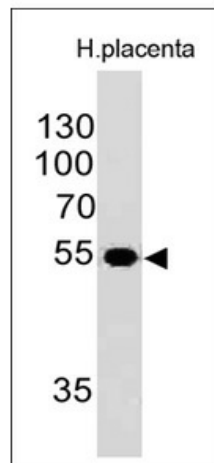
Product data:

Product Type:	Primary Antibodies
Clone Name:	ODC1/485
Applications:	FC, IF, IHC, IP, WB
Recommended Dilution:	ELISA: Use BSA free Antibody for coating. Flow Cytometry: 0.5-1 µg/million cells. Immunofluorescence: 0.5-1 µg/ml. Western Blotting: 0.5-1 µg/ml. Immunoprecipitation: 0.5-1 µg/500 µg protein lysate. Immunohistochemistry on Frozen and Formalin-Fixed Paraffin Sections: 0.5-1.0 µg/ml for 30 minutes at RT. Staining of formalin-fixed tissues requires boiling tissue sections in 10mM Citrate Buffer, pH 6.0, for 10-20 min followed by cooling at RT for 20 minutes. Recommended Positive Control: Epithelial cells in normal placenta or prostate carcinoma.
Reactivity:	Human
Host:	Mouse
Isotype:	IgG1
Clonality:	Monoclonal
Immunogen:	Recombinant Human ODC-1 protein.
Specificity:	Recognizes a 53kDa protein, identified as the Ornithine Decarboxylase (ODC-1). ODC is the initial and rate-limiting enzyme in the biosynthetic pathway of polyamines and is involved in the conversion of ornithine to putrescine. The biological activity of ODC-1 is rapidly induced in response to virtually all agents known to promote cell proliferation including hormones, drugs, growth factors, mitogens, and tumor promoters. Reportedly, ODC mRNA levels are elevated in lung carcinomas as well as in colon adenomas and carcinomas. ODC activity in colorectal carcinomas is greater than those in adenomas and normal mucosa. Cellular Localization: Cytoplasmic.

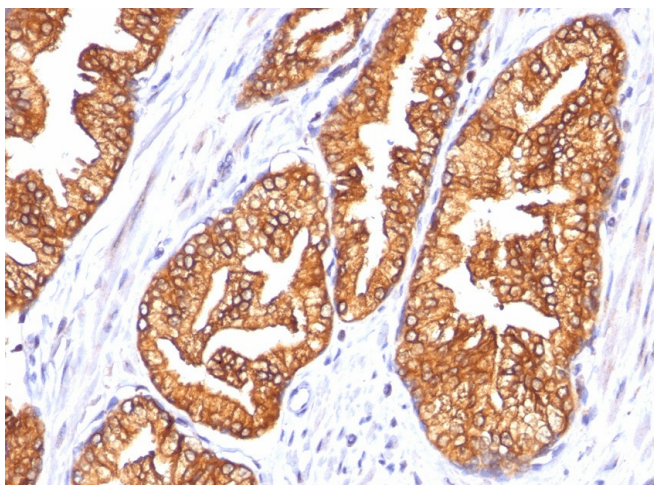


[View online »](#)

Formulation:	10mM PBS State: Purified State: Liquid purified IgG fraction from Bioreactor Concentrate Stabilizer: 0.05% BSA Preservative: 0.05% Sodium Azide
Concentration:	lot specific
Purification:	Protein A/G Chromatography
Conjugation:	Unconjugated
Storage:	Store undiluted at 2-8°C.
Stability:	Shelf life: one year from despatch.
Predicted Protein Size:	53 kDa
Gene Name:	ornithine decarboxylase 1
Database Link:	Entrez Gene 4953 Human P11926
Synonyms:	ODC, ODC1

Product images:

Western blot analysis of ODC1 in human placental lysate using ODC-1 Antibody (Clone ODC1/485).



Formalin-fixed, paraffin-embedded human prostate carcinoma stained with ODC-1 Antibody (Clone ODC1/485)