

Product datasheet for **AM50296PU-S**

MelanA (MLANA) Mouse Monoclonal Antibody [Clone ID: M2-7C10 + M2-9E3 + T311 + HMB45]

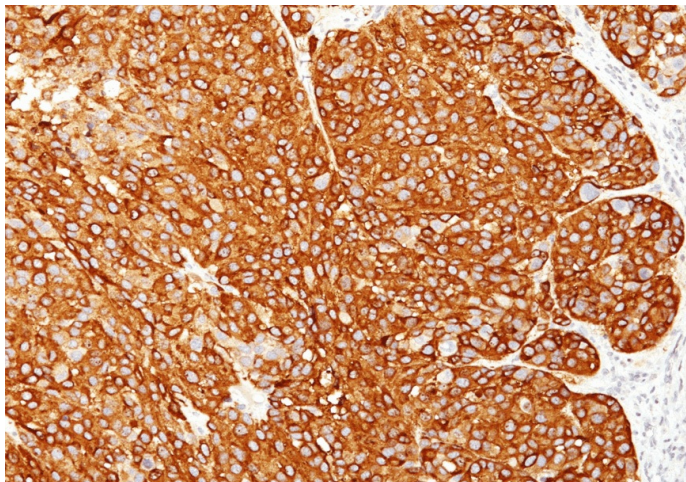
Product data:

Product Type:	Primary Antibodies
Clone Name:	M2-7C10 + M2-9E3 + T311 + HMB45
Applications:	IHC
Recommended Dilution:	Immunohistochemistry on Frozen and Formalin-Fixed Paraffin Sections: 0.5-1 µg/ml for 30 minutes at RT. Staining of formalin-fixed tissues requires boiling tissue sections in 10mM Citrate buffer, pH 6.0, for 10-20 min followed by cooling at RT for 20 minutes. Positive Control: SK-MEL-13 and SK-MEL-19 Melanoma cell lines; Melanomas.
Reactivity:	Human
Host:	Mouse
Clonality:	Monoclonal
Immunogen:	Recombinant Human MART-1 protein (M2-7C10; M2-9E3); Recombinant Tyrosinase protein (T311); Extract of pigmented melanoma metastases from lymph nodes (HMB45). Isotypes: Mouse/IgG2b (M2-7C10 & M2-9E3) + Mouse/IgG2a (T311) + Mouse/IgG1 (HMB45)
Specificity:	This antibody cocktail recognizes three melanoma-specific proteins, which include MART-1, Tyrosinase and gp100. MART-1 is a newly identified melanocyte differentiation antigen recognized by autologous cytotoxic T lymphocytes. Tyrosinase is one of the targets for cytotoxic T-cell recognition in melanoma patients. Function of gp100 is not known but it is reported to be a useful marker for melanocytes and melanomas. This cocktail of three markers is designed for extremely sensitive labeling of formalin-fixed, paraffin-embedded melanomas and other tumors showing melanocytic differentiation. Cellular Localization: Cytoplasmic.
Formulation:	10mM PBS State: Purified State: Liquid purified IgG fraction from Bioreactor Concentrate Stabilizer: 0.05% BSA Preservative: 0.05% Sodium Azide
Concentration:	lot specific
Purification:	Protein A/G Chromatography
Conjugation:	Unconjugated



[View online »](#)

Storage:	Store undiluted at 2-8°C.
Stability:	Shelf life: one year from despatch.
Predicted Protein Size:	20-22 kDa (doublet) (MART); 70-80 kDa (Tyrosinase); 90-100 kDa (gp100)
Gene Name:	melan-A
Database Link:	Entrez Gene 2315 Human Q16655
Synonyms:	Melanoma antigen recognized by T-cells 1 (MART-1), MLAN-A, TYR, PMEL17

Product images:

Formalin-Fixed, Paraffin-Embedded human melanoma stained with Melanoma Marker Antibody (Clone M2-7C10+M2-9E3+T311+HMB45). Note cytoplasmic staining of cells.