

Product datasheet for **AM50279PU-T**

hCG beta (CGB3) Mouse Monoclonal Antibody [Clone ID: HCGb/459]

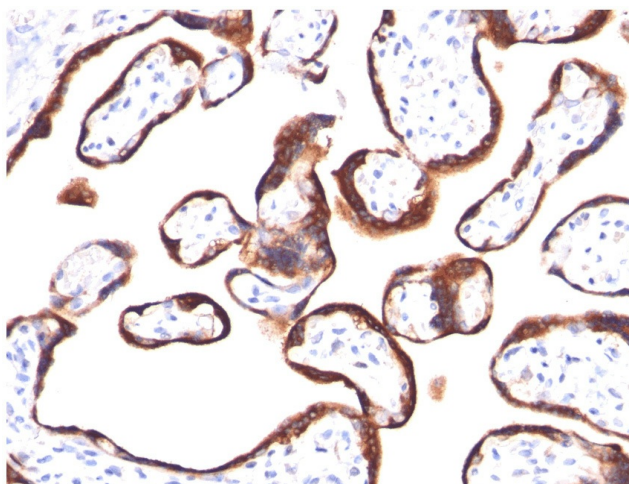
Product data:

Product Type:	Primary Antibodies
Clone Name:	HCGb/459
Applications:	IHC, WB
Recommended Dilution:	ELISA: For coating, order Ab without BSA. Western Blot: 0.5-1 µg/ml. Immunohistochemistry on Frozen and formalin-Fixed Paraffin Sections: 0.5-1 µg/ml for 30 min RT. Staining of formalin-fixed tissues requires boiling tissue sections in 10mM citrate buffer, pH 6.0, for 10-20 min followed by cooling at RT for 20 minutes. Positive Control: Placenta.
Reactivity:	Human
Host:	Mouse
Isotype:	IgG1
Clonality:	Monoclonal
Immunogen:	Recombinant hCG beta protein.
Specificity:	This Monoclonal Antibody reacts with a protein of 22kDa, identified as beta sub-unit of HCG. It does not cross react with the alpha sub-unit. HCG is a glycoprotein, which is secreted in large quantities by normal trophoblasts. It is present only in trace amounts in non-pregnant urine and sera but rises sharply during pregnancy. HCG is composed of two non-identical, non-covalently linked polypeptide chains designated as the α and β subunits. The α subunit is identical to that of thyroid stimulating hormone (TSH), follicle stimulating hormone (FSH), and luteinizing hormone (LH). hCG MAb detects cells and tumors of trophoblastic origin such as choriocarcinoma. Large cell carcinoma and adenocarcinoma of the lung demonstrate anti-hCG positivity in 90% and 60% of cases respectively. 20% of lung squamous cell carcinomas are positive. hCG expression by non-trophoblastic tumors may indicate aggressive behavior. Cellular Localization: Cytoplasmic, secreted.



[View online »](#)

Formulation:	10mM PBS State: Purified State: Liquid purified IgG fraction from Bioreactor Concentrate Stabilizer: 0.05% BSA Preservative: 0.05% Sodium Azide
Concentration:	lot specific
Purification:	Protein A/G Chromatography
Conjugation:	Unconjugated
Storage:	Store undiluted at 2-8°C.
Stability:	Shelf life: one year from despatch.
Predicted Protein Size:	22 kDa
Gene Name:	chorionic gonadotropin beta subunit 3
Database Link:	Entrez Gene 1082 Human P0DN86
Synonyms:	Choriogonadotropin subunit beta, CGB, CGB3, beta hCG, hCG-beta

Product images:

Formalin-Fixed, Paraffin-Embedded Human Placenta stained with hCG beta Antibody (Clone HCGb/459). Note specific membrane staining.