

Product datasheet for **AM50264PU-S**

TMEM16A (ANO1) Mouse Monoclonal Antibody [Clone ID: DG1/447 + DOG-1.1]

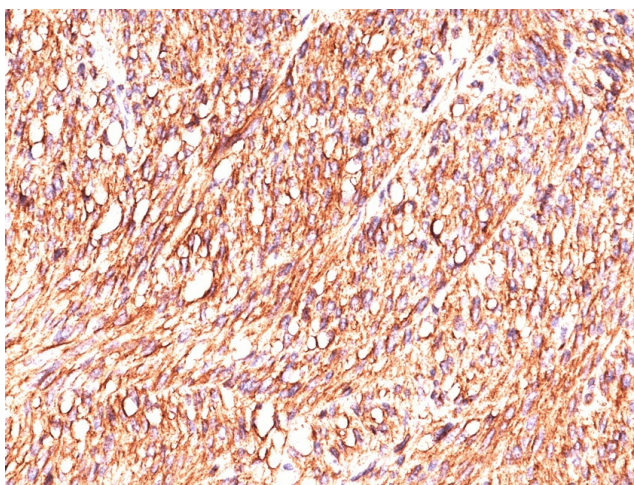
Product data:

| | |
|-----------------------|---|
| Product Type: | Primary Antibodies |
| Clone Name: | DG1/447 + DOG-1.1 |
| Applications: | IHC |
| Recommended Dilution: | Immunohistochemistry on Formalin-fixed Sections: 1.0 - 2.0 µg/ml for 30 minutes at RT. Staining of formalin-fixed tissues requires heating tissue sections in 10mM Tris with 1mM EDTA, pH 9.0, for 45 min at 95°C followed by cooling at RT for 20 minutes. Positive Control: Gastrointestinal Stromal Tumor (GIST) or testicular germ cell tumor. Melanocytes in the basal layer of the epidermis and mast cells in the dermis of normal skin. |
| Reactivity: | Human |
| Host: | Mouse |
| Isotype: | IgG1 |
| Clonality: | Monoclonal |
| Immunogen: | Recombinant Human DOG-1 protein (DG1/447) and a synthetic peptide from Human DOG-1 protein (MSDFVDWVIPDIPKDISQQIHK-EKVLMLVELFMREEQDKQQLLETCMEKER QKDEPPCNHHNTKACPDSLGP-APSHAYHGGVL), conjugated to a carrier protein (DOG-1.1). |
| Specificity: | Expression of DOG-1 protein is elevated in the gastrointestinal stromal tumors (GIST's), c-kit signaling-driven mesenchymal tumors of the GI tract. DOG-1 is rarely expressed in other soft tissue tumors, which, due to appearance, may be difficult to diagnose. Immunoreactivity for DOG-1 has been reported in 97.8 percent of scorable GIST's, including all c-kit negative GIST's. Overexpression of DOG-1 has been suggested to aid in the identification of GISTs, including Platelet-Derived Growth Factor Receptor Alpha mutants that fail to express c-kit antigen. The overall sensitivity of DOG1 and c-kit in GIST's is nearly identical: 94.4% vs. 94.7%. Cellular Localization: Cell Surface and Cytoplasmic. |
| Formulation: | 10mM PBS State: Purified State: Liquid purified IgG fraction from Bioreactor Concentrate Stabilizer: 0.05% BSA Preservative: 0.05% Sodium Azide |
| Concentration: | lot specific |
| Purification: | Protein A/G Chromatography |



[View online »](#)

| | |
|-------------------------|---|
| Conjugation: | Unconjugated |
| Storage: | Store undiluted at 2-8°C. |
| Stability: | Shelf life: one year from despatch. |
| Predicted Protein Size: | ~114 kDa |
| Gene Name: | anoctamin 1 |
| Database Link: | Entrez Gene 55107 Human Q5XXA6 |
| Background: | DOG1 gene, a gastrointestinal stromal tumor (GIST) specific gene, encoding for the hypothetical protein FLJ10261, which was named <i>Discovered on GIST 1</i> (DOG1). DOG1 protein is expressed ubiquitously in gastrointestinal stromal tumors irrespective of KIT or PDGFR alpha mutation status. |
| Synonyms: | Anoctamin-1, Transmembrane protein 16A, DOG-1, ORAOV2, TAOS2, TMEM16A |

Product images:

Formalin-fixed, paraffin-embedded human GIST (20X) stained with DOG1 Antibody AM50156PU (Clone DG1/447 + DOG1.1).