

## Product datasheet for **AM50261PU-S**

### Cytokeratin 8 (KRT8) Mouse Monoclonal Antibody [Clone ID: K8.8 + DC10]

#### Product data:

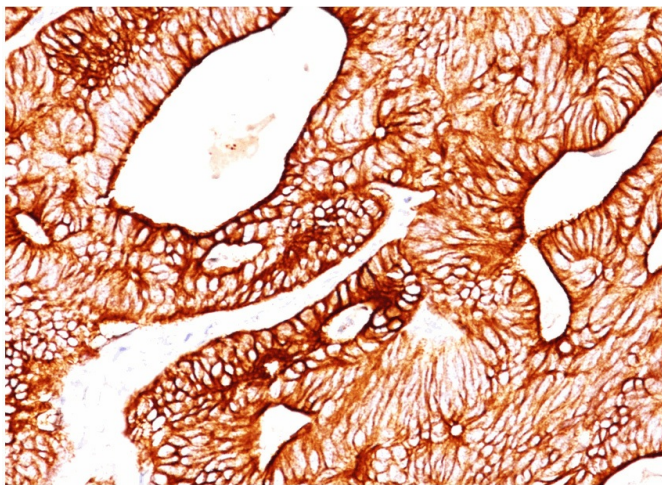
Product Type:	Primary Antibodies
Clone Name:	K8.8 + DC10
Applications:	FC, IF, IHC, IP, WB
Recommended Dilution:	<b>Flow Cytometry:</b> 0.5-1 µg/10 <sup>6</sup> cells. <b>Immunofluorescence:</b> 1-2 µg/ml. <b>Western Blot:</b> 0.5-1 µg/ml. <b>Immunoprecipitation:</b> 1-2 µg/500 µg protein lysate. <b>Immunohistochemistry on Frozen and Formalin-Fixed Paraffin Sections:</b> 0.5-1 µg/ml for 30 minutes at RT. Staining of formalin-fixed tissues requires boiling tissue sections in 10mM Citrate Buffer, pH 6.0, for 10-20 min followed by cooling at RT for 20 minutes. <b>Positive Control:</b> MCF-7 or A431 cells. Skin, Colon, lung or breast carcinoma
Reactivity:	Human
Host:	Mouse
Isotype:	IgG1
Clonality:	Monoclonal
Immunogen:	Keratin preparation from a Human carcinoma (K8.8) and PMC-42 Human breast carcinoma cells (DC10).
Specificity:	Cytokeratin 8 (CK8) belongs to the type II (or B or basic) subfamily of high molecular weight cytokeratins and exists in combination with cytokeratin 18 (CK18). This Monoclonal Antibody cocktail recognizes all simple epithelia including glandular epithelium, for example thyroid, female breast, gastrointestinal tract, respiratory tract, and urogenital tract including transitional epithelium. All adenocarcinomas and most squamous carcinomas are positive but keratinizing squamous carcinomas are usually negative. Immunohistochemical staining with this MAb is indistinguishable from that obtained with monoclonal antibody 5D3. <b>Cellular Localization:</b> Cytoplasmic.



[View online »](#)

<b>Formulation:</b>	10mM PBS State: Purified State: Liquid purified IgG fraction from Bioreactor Concentrate Stabilizer: 0.05% BSA Preservative: 0.05% Sodium Azide
<b>Concentration:</b>	lot specific
<b>Purification:</b>	Protein A/G Chromatography
<b>Conjugation:</b>	Unconjugated
<b>Storage:</b>	Store undiluted at 2-8°C.
<b>Stability:</b>	Shelf life: one year from despatch.
<b>Predicted Protein Size:</b>	52.5 kDa (CK8); 45 kDa (CK18)
<b>Gene Name:</b>	keratin 8
<b>Database Link:</b>	<a href="#">Entrez Gene 3856 Human P05787</a>
<b>Synonyms:</b>	CARD2, CK8, CYK8, CYKER, Cytokeratin Endo A, DreK8, EndoA, K2C8, K8, Keratin 8, Krt 2.8, KRT8, Type-II Keratin Kb8. Cell Proliferation-inducing Gene 46 Protein, CK18, CYK18 Cytokeratin Endo B, K18, Keratin-18, Kerd, KRT18

### Product images:



Formalin-paraffin colon carcinoma stained with Cytokeratin 8/18 Antibody (Clone K8.8+DC10).