

Product datasheet for **AM50256PU-T**

Cytokeratin 19 (KRT19) Mouse Monoclonal Antibody [Clone ID: A53-B/A2.26 + BA17]

Product data:

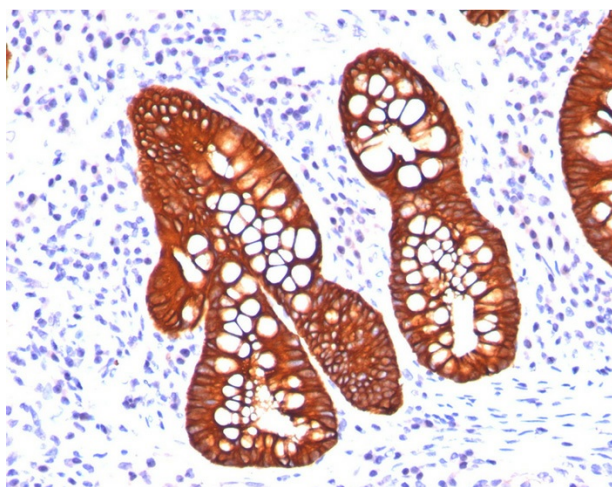
| | |
|-----------------------|--|
| Product Type: | Primary Antibodies |
| Clone Name: | A53-B/A2.26 + BA17 |
| Applications: | FC, IF, IHC, IP, WB |
| Recommended Dilution: | <p>Flow Cytometry: 0.5-1 µg/million cells.</p> <p>Immunofluorescence: 1-2 µg/ml.</p> <p>Western Blotting: <i>Not tested</i> (0.5-1 µg/ml).</p> <p>Immunoprecipitation: <i>Not tested</i> (1-2 µg/500 µg protein lysate).</p> <p>Immunohistochemistry on Frozen and Formalin-Fixed Sections: 0.5-1.0 µg/ml for 30 minutes at RT.</p> <p>Staining of formalin-fixed tissues requires boiling tissue sections in 10mM Citrate Buffer, pH 6.0, for 10-20 min followed by cooling at RT for 20 minutes.</p> <p>Positive Control: MCF-7, HeLa cells, Breast Cancer.</p> |
| Reactivity: | Human, Mouse |
| Host: | Mouse |
| Clonality: | Monoclonal |
| Immunogen: | Human breast cancer MCF-7 cells (A53-B/A2); Human mammary epithelial organoids (BA17). |
| Specificity: | <p>This Monoclonal Antibody reacts with the rod domain of Human Cytokeratin 19 (CK19), a polypeptide of 40kDa. CK19 is expressed in sweat gland, mammary gland ductal and secretory cells, bile ducts, gastrointestinal tract, bladder urothelium, oral epithelia, esophagus, and ectocervical epithelium. Anti-CK19 reacts with a wide variety of epithelial malignancies including adenocarcinomas of the colon, stomach, pancreas, biliary tract, liver, and breast. Perhaps the most useful application is the identification of thyroid carcinoma of the papillary type, although 50%-60% of follicular carcinomas are also labeled. Anti-CK19 is a useful marker for detection of tumor cells in lymph nodes, peripheral blood, bone marrow and breast cancer.</p> <p>Cellular Localization: Cytoplasmic.</p> |
| Formulation: | <p>10mM PBS</p> <p>State: Purified</p> <p>State: Liquid purified IgG fraction from Bioreactor Concentrate</p> <p>Stabilizer: 0.05% BSA</p> <p>Preservative: 0.05% Sodium Azide</p> |



[View online »](#)

| | |
|-------------------------|---|
| Concentration: | lot specific |
| Purification: | Protein A/G Chromatography |
| Conjugation: | Unconjugated |
| Storage: | Store undiluted at 2-8°C. |
| Stability: | Shelf life: one year from despatch. |
| Predicted Protein Size: | 40 kDa |
| Database Link: | Entrez Gene 3880 Human P08727 |
| Synonyms: | Cytokeratin-19, Keratin-19, KRT19, CK19, K19 |

Product images:



Formalin-Paraffin colon carcinoma stained with Cytokeratin 19 Antibody (Clone A53-B/A2.26 + BA17).