

## Product datasheet for **AM50246PU-S**

### CD68 Mouse Monoclonal Antibody [Clone ID: C68/684]

#### Product data:

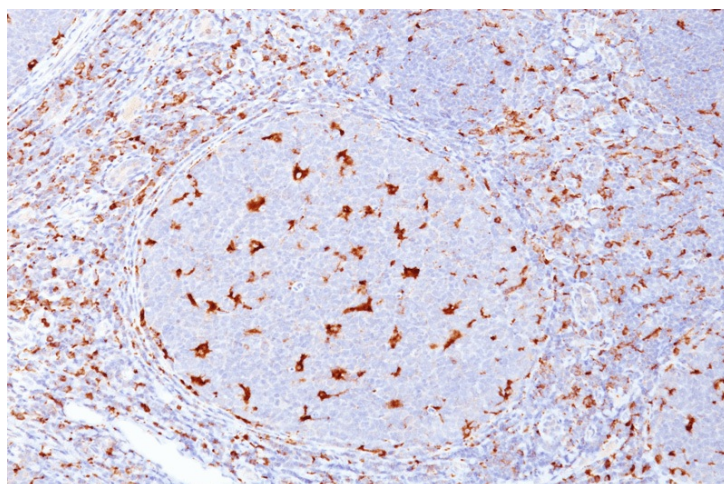
Product Type:	Primary Antibodies
Clone Name:	C68/684
Applications:	FC, IF, IHC, IP, WB
Recommended Dilution:	<b>Flow Cytometry:</b> 0.5-1 µg/10 <sup>6</sup> cells. <b>Immunofluorescence:</b> 0.5-1 µg/ml. <b>Western Blotting:</b> 0.5-1 µg/ml. <b>Immunoprecipitation:</b> 0.5-1 µg/500 µg protein lysate. <b>Immunohistochemistry (Formalin-Fixed):</b> 0.25-0.5 µg/ml for 30 minutes at RT. (Staining of formalin-fixed tissues is enhanced by boiling tissue sections in 10mM citrate buffer, pH 6.0, for 10-20 min followed by cooling at RT for 20 minutes). <b>Positive Control:</b> Tonsil, Lymph Node or Spleen.
Reactivity:	Human, Monkey, Feline, Mouse, Rat
Host:	Mouse
Isotype:	IgG1
Clonality:	Monoclonal
Immunogen:	Recombinant human CD68 protein
Specificity:	This antibody recognizes a glycoprotein of 110kDa, which is identified as CD68. It is important for identifying macrophages in tissue sections. It stains macrophages in a wide variety of human tissues, including Kupffer cells and macrophages in the red pulp of the spleen, in lamina propria of the gut, in lung alveoli, and in bone marrow. It reacts with myeloid precursors and peripheral blood granulocytes. It also reacts with plasmacytoid T cells, which are supposed to be of monocyte/macrophage origin. It shows strong granular cytoplasmic staining of chronic and acute myeloid leukemia and also reacts with rare cases of true histiocytic neoplasia. Lymphomas are negative or show few granules. <b>Cellular Localization:</b> Cytoplasmic.
Formulation:	10mM PBS State: Purified State: Liquid purified IgG fraction from Bioreactor Concentrate Stabilizer: 0.05% BSA Preservative: 0.05% Sodium Azide



[View online »](#)

Concentration:	lot specific
Purification:	Protein A/G Chromatography
Conjugation:	Unconjugated
Storage:	Store undiluted at 2-8°C.
Stability:	Shelf life: one year from despatch.
Predicted Protein Size:	110 kDa
Gene Name:	CD68 molecule
Database Link:	<a href="#">Entrez Gene 968 Human P34810</a>
Synonyms:	Gp110, Macrosialin, Macrophage marker

### Product images:



Formalin-Fixed, Paraffin-Embedded Human tonsil (10X) stained with CD68 Antibody (Clone C68/684).