

Product datasheet for **AM50243PU-T**

CD6 Mouse Monoclonal Antibody [Clone ID: C6/372 + 3F7B5]

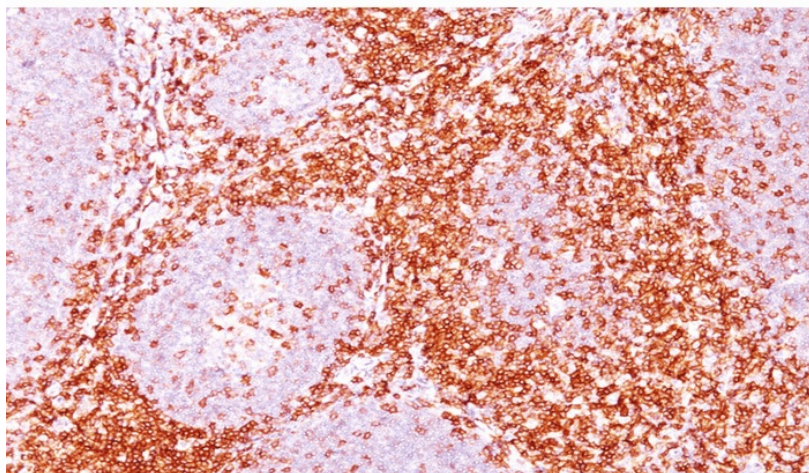
Product data:

Product Type:	Primary Antibodies
Clone Name:	C6/372 + 3F7B5
Applications:	FC, IF, IHC, IP, WB
Recommended Dilution:	Flow Cytometry: 0.5-1 µg/million cells. Immunofluorescence: 0.5-1 µg/ml. Immunoprecipitation: 0.5-1 µg/500 µg protein. Western Blotting: 0.5-1 µg/ml. Immunohistochemistry on Frozen and Formalin-Fixed Paraffin Sections: 0.5-1 µg/ml for 30 min at RT. Staining of formalin-fixed tissues requires boiling tissue sections in 10mM Citrate Buffer, pH 6.0, for 10-20 min followed by cooling at RT for 20 minutes. Positive Control: CCRF-CEM, Jurkat cells, Tonsil.
Reactivity:	Human
Host:	Mouse
Isotype:	IgG1
Clonality:	Monoclonal
Immunogen:	Human recombinant CD6 protein (C6/372) and Human rheumatoid synovial T cell line ST-1 (3F7B5).
Specificity:	CD6 is a type I transmembrane glycoprotein that contains a 24-amino acid signal sequence, three extracellular "scavenger receptor cysteine-rich" (SRCR) domains, a membrane-spanning domain and a 44-amino acid cytoplasmic domain. The CD6 glycoprotein is tyrosine phosphorylated during TCR-mediated T cell activation. CD6 shows significant homology to CD5. CD6 is present on mature thymocytes, peripheral T cells and a subset of B cells. Antibodies to CD6 are used to deplete T cells from bone marrow transplants to prevent graft versus host disease. Cellular Localization: Cell surface and cytoplasmic.

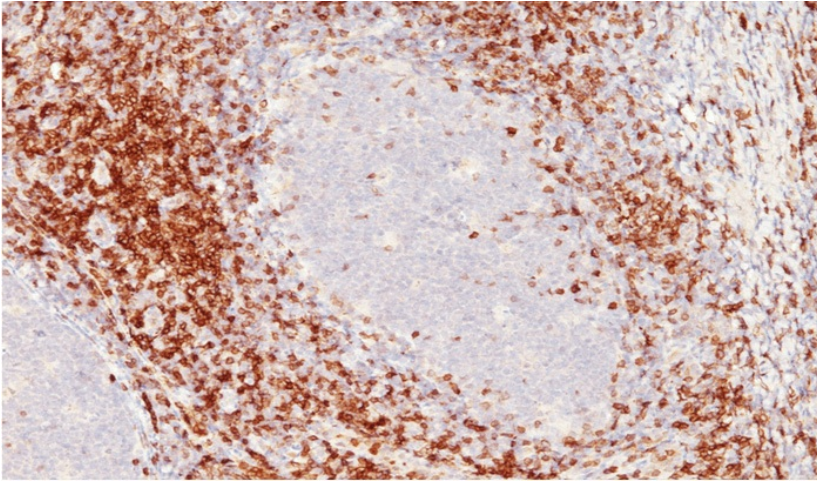


[View online »](#)

Formulation:	10mM PBS State: Purified State: Liquid purified IgG fraction from Bioreactor Concentrate Stabilizer: 0.05% BSA Preservative: 0.05% Sodium Azide
Concentration:	lot specific
Purification:	Protein A/G Chromatography
Conjugation:	Unconjugated
Storage:	Store undiluted at 2-8°C.
Stability:	Shelf life: one year from despatch.
Predicted Protein Size:	90-130 kDa
Gene Name:	CD6 molecule
Database Link:	Entrez Gene 923 Human P30203
Synonyms:	T12, TP120

Product images:

Formalin-Fixed, Paraffin-Embedded Human tonsil (10X) stained with CD6 Antibody (Clone C6/372+3F7B5).



Formalin-Fixed, Paraffin-Embedded Human tonsil (20X) stained with CD6 Antibody (Clone C6/372+3F7B5).