

## Product datasheet for **AM50237PU-T**

### CD5 Mouse Monoclonal Antibody [Clone ID: C5/473+CD5/54/F6]

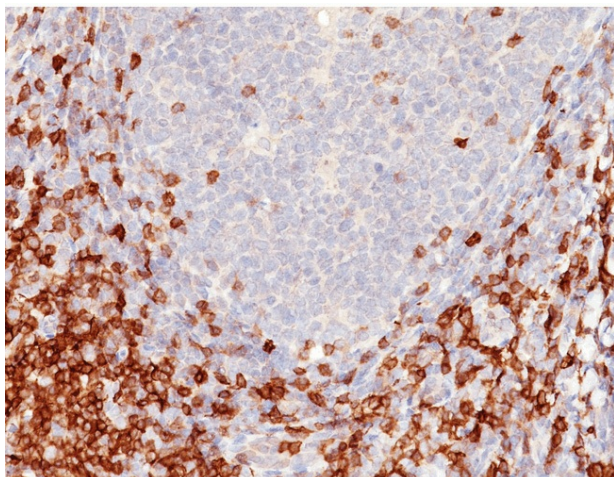
#### Product data:

Product Type:	Primary Antibodies
Clone Name:	C5/473+CD5/54/F6
Applications:	FC, IF, IHC, IP, WB
Recommended Dilution:	<b>Western Blot:</b> 0.5-1 µg/ml. <b>Immunoprecipitation:</b> 0.5-1 µg/500 µg protein lysate. <b>Flow Cytometry:</b> 0.5-1 µg/10 <sup>6</sup> cells. <b>Immunofluorescence:</b> 0.5-1 µg/ml. <b>Immunohistochemistry on Frozen and Formalin-Fixed Paraffin Sections:</b> 0.5-1 µg/ml for 30 minutes at RT. Staining of formalin-fixed tissues requires boiling tissue sections in 10mM citrate buffer, pH 6.0, for 10-20 min followed by cooling at RT for 20 minutes. <b>Positive Control:</b> 293T, Ramos, or MOLT-4 Cells, Tonsil.
Reactivity:	Human
Host:	Mouse
Isotype:	IgG1
Clonality:	Monoclonal
Immunogen:	Human CD5 recombinant protein (C5/473) and A synthetic peptide from the intracellular region of Human CD5 (CD5/54/F6).
Specificity:	Recognizes a 67kDa transmembrane protein, which is identified as CD5. The CD5 antigen is found on 95% of thymocytes and 72% of peripheral blood lymphocytes. In lymph nodes, the main reactivity is observed in T cell areas. Anti-CD5 is a pan T-cell marker that also reacts with a range of neoplastic B-cells, e.g. chronic lymphocytic leukemia/small lymphocytic lymphoma (CLL/SLL), mantle cell lymphoma, and a subset (~10%) of diffuse large B-cell lymphoma. CD5 aberrant expression is useful in making a diagnosis of mature T-cell neoplasms. Anti-CD5 detection is diagnostic in CLL/SLL within a panel of other B-cell markers, especially one that includes anti-CD23. Anti-CD5 is also very useful in differentiating among mature small lymphoid cell malignancies. In addition, anti-CD5 can be used in distinguishing thymic carcinoma (+) from thymoma (-). Anti-CD5 does not react with granulocytes or monocytes. <b>Cellular Localization:</b> Cell surface.



[View online »](#)

<b>Formulation:</b>	10mM PBS State: Purified State: Liquid purified IgG fraction from Bioreactor Concentrate Stabilizer: 0.05% BSA Preservative: 0.05% Sodium Azide
<b>Concentration:</b>	lot specific
<b>Purification:</b>	Protein A/G Chromatography
<b>Conjugation:</b>	Unconjugated
<b>Storage:</b>	Store undiluted at 2-8°C.
<b>Stability:</b>	Shelf life: one year from despatch.
<b>Predicted Protein Size:</b>	67 kDa
<b>Gene Name:</b>	CD5 molecule
<b>Database Link:</b>	<a href="#">Entrez Gene 921 Human P06127</a>
<b>Background:</b>	CD5, a 67KDa Type I transmembrane glycoprotein, is a member of SRCR superfamily expressed specifically of thymocytes, mature T-cells and B-1a cells. CD5 has an extracellular domain with 3 SRCR domains and cytoplasmic tail is devoid of any intrinsic enzyme activity. CD5 functions as a dual receptor modulating either positive or negative co-stimulatory signals depending on the cell type and the developmental stage. It binds CD72 and provides co-stimulatory signal for T-cell growth. CD5 plays an important role in thymocyte development and also fine-tunes TCR signaling. It is associated with antigen-specific receptor complex expressed on T-cells and B-1a cells and regulates T and B-cell mediated responses. CD5 signaling involves various kinases including PI3K, Src family tyrosine kinases, CKII, Ras GAP, and members of MAPK.
<b>Synonyms:</b>	CD5, LEU1

**Product images:**

Formalin-Fixed, Paraffin-Embedded Human tonsil stained with CD5 Antibody (Clone C5/473 + CD5/54/F6).