

Product datasheet for **AM50212PU-S**

CD1B Mouse Monoclonal Antibody [Clone ID: RIV12]

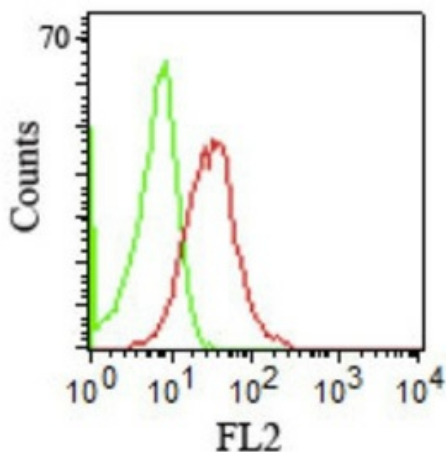
Product data:

Product Type:	Primary Antibodies
Clone Name:	RIV12
Applications:	FC, IF, IHC, IP
Recommended Dilution:	ELISA: Use BSA free Antibody for coating. Flow Cytometry: 0.5-1 µg/million cells. Immunofluorescence: 1-2 µg/ml. Immunoprecipitation: 1-2 µg/500 µg protein. Functional Studies: Use Antibody without BSA and Azide. Immunohistochemistry on Frozen Sections: 0.5-1 µg/ml for 30 min at RT. Positive Control: MOLT4 cells. Human thymus.
Reactivity:	Human
Host:	Mouse
Isotype:	IgG1
Clonality:	Monoclonal
Immunogen:	Human peripheral lymphocytes.
Specificity:	The Mouse monoclonal antibody recognizes CD1b, a 44kDa type I glycoprotein associated with beta 2-microglobulin. It is expressed on dendritic cells, Langerhans cells, thymocytes, and T acute lymphoblastic leukemia cells. The CD1 multigene family encodes five forms of the CD1 T-cell surface glycoprotein in human, designated CD1A, 1B, 1C, 1D and 1E. CD1, a type 1 membrane protein, has structural similarity to the MHC class I antigen and has been shown to present lipid antigens for recognition by T lymphocytes. Constitutive endocytosis of CD1B molecules and the differential sorting of MHC class II from lysosomes separate peptide- and lipid antigen-presenting molecules during dendritic cell maturation. CD1B is also expressed in interdigitating cells. Cellular Localization: Cell surface.
Formulation:	10mM PBS State: Purified State: Liquid purified IgG fraction from Bioreactor Concentrate Stabilizer: 0.05% BSA Preservative: 0.05% Sodium Azide



[View online »](#)

Concentration:	lot specific
Purification:	Protein A/G Chromatography
Conjugation:	Unconjugated
Storage:	Store undiluted at 2-8°C.
Stability:	Shelf life: one year from despatch.
Predicted Protein Size:	44 kDa
Gene Name:	CD1b molecule
Database Link:	Entrez Gene 910 Human P29016
Synonyms:	CD1; CD1A; MGC125990; MGC125991; R1

Product images:

FCM staining of Human PBMCs using CD1b Antibody AM50217PU (Clone RIV12).