

Product datasheet for **AM50211PU-T**

CD1 (CD1A) Mouse Monoclonal Antibody [Clone ID: O10+C1A/711]

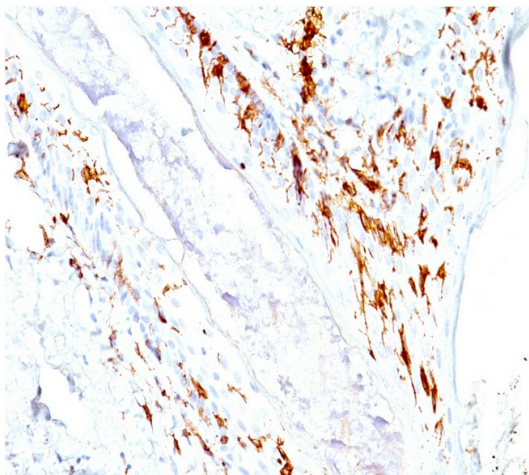
Product data:

Product Type:	Primary Antibodies
Clone Name:	O10+C1A/711
Applications:	FC, IF, IHC, IP, WB
Recommended Dilution:	Flow Cytometry: 0.5-1 µg/million cells. Immunofluorescence: 1-2 µg/ml. Immunoprecipitation: 1-2 µg/500 µg protein. Western Blotting: 0.5-1 µg/ml. Immunohistochemistry on Frozen and Formalin-Fixed Paraffin Sections: 0.5-1 µg/ml for 30 min at RT. Staining of formalin-fixed tissues requires boiling tissue sections in 10mM Citrate Buffer, pH 6.0, for 10-20 min followed by cooling at RT for 20 minutes. Positive Control: MOLT-4 cells. Paracortex in a tonsil or a reactive lymph node.
Reactivity:	Human
Host:	Mouse
Isotype:	IgG1
Clonality:	Monoclonal
Immunogen:	Human thymus cells (O10); Recombinant Human CD1a protein (C1A/711).
Specificity:	Anti-CD1a labels Langerhans cell histiocytosis (Histiocytosis X), extranodal histiocytic sarcoma, a subset of T-lymphoblastic lymphoma/leukemia, and interdigitating dendritic cell sarcoma of the lymph node. When combined with antibodies against TTF-1 and CD5, anti-CD1a is useful in distinguishing between pulmonary and thymic neoplasms since CD1a is consistently expressed in thymic lymphocytes in both typical and atypical thymomas, but only focally in 1/6 of thymic carcinomas and not in lymphocytes in pulmonary neoplasms. Anti-CD1a is reported to be a new marker for perivascular epithelial cell tumor (PEComa). Cellular Localization: Cell surface.
Formulation:	10mM PBS State: Purified State: Liquid purified IgG fraction from Bioreactor Concentrate Stabilizer: 0.05% BSA Preservative: 0.05% Sodium Azide
Concentration:	lot specific



[View online »](#)

Purification:	Protein A/G Chromatography
Conjugation:	Unconjugated
Storage:	Store undiluted at 2-8°C.
Stability:	Shelf life: one year from despatch.
Predicted Protein Size:	49 kDa
Gene Name:	CD1a molecule
Database Link:	Entrez Gene 909 Human P06126
Background:	At least five CD1 genes (CD1a, b, c, d, and e) are identified. CD1 proteins have been demonstrated to restrict T cell response to non-peptide lipid and glycolipid antigens and play a role in non-classical antigen presentation. CD1a is a non-polymorphic MHC Class 1 related cell surface glycoprotein, expressed in association with Beta-2 microglobulin.
Synonyms:	T6/Leu-6, hTa1

Product images:

Formalin-Paraffin Human skin stained with CD1a Antibody (Clone O10+C1A/711).