

Product datasheet for **AM50204PU-T**

CD11a (ITGAL) Mouse Monoclonal Antibody [Clone ID: CRIS-3]

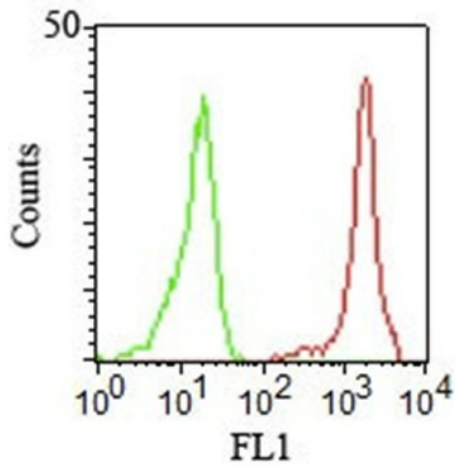
Product data:

Product Type:	Primary Antibodies
Clone Name:	CRIS-3
Applications:	FC, IF, IHC, IP
Recommended Dilution:	ELISA: Use BSA free Antibody for coating. Flow Cytometry: 0.5-1 µg/million cells. Immunofluorescence: 0.5-1 µg/ml. Immunoprecipitation: 0.5-1 µg/500 µg protein lysate. Functional Studies: Use BSA and Azide free Antibody. Immunohistochemistry on Frozen Sections: 0.5-1.0 µg/ml for 30 minutes at RT. Positive Control: JY, HUT-78, MOLT-4, HL60, U937, and human leukocytes. Human lymph nodes and tonsils.
Reactivity:	Human
Host:	Mouse
Isotype:	IgG2b
Clonality:	Monoclonal
Immunogen:	Stimulated Human leukocytes.
Specificity:	Recognizes a protein of 180kDa, identified as CD11a (Leucocyte Workshop II; Code N202). CD11a complex with the $\alpha 2$ subunit of the integrin family, CD18, to form the cell surface heterodimer, LFA-1 or CD11a /C18 (aLbL). LFA-1 is expressed on all leukocytes including lymphocytes, monocytes, and granulocytes. It is involved in leukocyte adhesion to its ligands including intercellular adhesion molecule-1 (ICAM-1 or CD54), ICAM-2 (CD102), ICAM-3 (CD50) and Telencephalin (TLN) and play a role in most immune/inflammatory responses. Cellular Localization: Cell surface
Formulation:	10mM PBS State: Purified State: Liquid purified IgG fraction from Bioreactor Concentrate Stabilizer: 0.05% BSA Preservative: 0.05% Sodium Azide
Concentration:	lot specific
Purification:	Protein A/G Chromatography



[View online »](#)

Conjugation:	Unconjugated
Storage:	Store undiluted at 2-8°C.
Stability:	Shelf life: one year from despatch.
Predicted Protein Size:	180 kDa
Gene Name:	integrin subunit alpha L
Database Link:	Entrez Gene 3683 Human P20701
Synonyms:	Integrin alpha-L, LFA1, LFA-1

Product images:

FCM staining of Human PBMCs using CD11a / ITGAL Antibody (Clone CRIS-3).