

## Product datasheet for **AM50192PU-S**

### CD8A Mouse Monoclonal Antibody [Clone ID: SPM548]

#### Product data:

Product Type:	Primary Antibodies
Clone Name:	SPM548
Applications:	FC, IF, IHC, IP, WB
Recommended Dilution:	<b>ELISA:</b> Use BSA free Antibody for coating. <b>Flow Cytometry:</b> 0.5-1 µg/million cells. <b>Immunofluorescence:</b> 0.5-1 µg/ml. <b>Immunoprecipitation:</b> 0.5-1 µg/500 µg protein. <b>Western Blotting:</b> 0.5-1 µg/ml. <b>Immunohistochemistry on Frozen and Formalin-Fixed Paraffin Sections:</b> 0.5-1 µg/ml for 30 min at RT. Staining of formalin-fixed tissues requires boiling tissue sections in 10mM Citrate Buffer, pH 6.0, for 10-20 min followed by cooling at RT for 20 minutes. <b>Positive Control:</b> HuT78 or hPBL, Tonsil.
Reactivity:	Human
Host:	Mouse
Isotype:	IgG1
Clonality:	Monoclonal
Immunogen:	Human CD8 recombinant protein.
Specificity:	Recognizes CD8a. <b>Cellular Localization:</b> Cell surface.
Formulation:	10mM PBS State: Purified State: Liquid purified IgG fraction from Bioreactor Concentrate Stabilizer: 0.05% BSA Preservative: 0.05% Sodium Azide
Concentration:	lot specific
Purification:	Protein A/G Chromatography
Conjugation:	Unconjugated
Storage:	Store undiluted at 2-8°C.
Stability:	Shelf life: one year from despatch.



[View online »](#)

**Predicted Protein Size:** 32 kDa

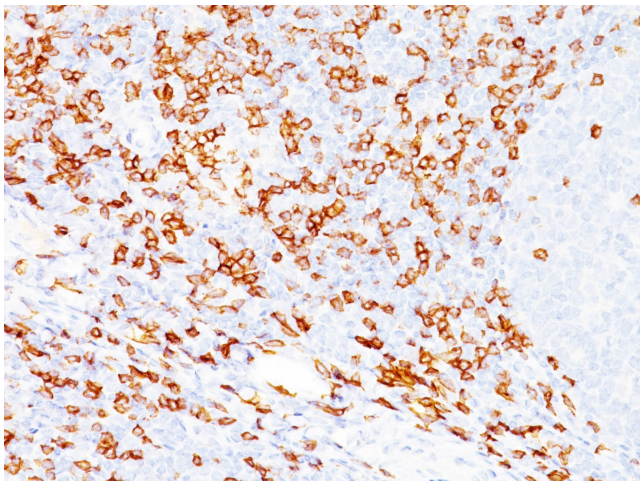
**Gene Name:** CD8a molecule

**Database Link:** [Entrez Gene 925 Human P01732](#)

**Background:** CD8 is a cell surface receptor expressed either as a heterodimer with the CD8 beta chain (CD8 alpha/beta) or as a homodimer (CD8 alpha/alpha). A majority of thymocytes and a subpopulation of mature T cells and NK cells express CD8a. CD8 binds to MHC class 1 and through its association with protein tyrosine kinase p56lck plays a role in T cell development and activation of mature T cells. For mature T-cells, CD4 and CD8 are mutually exclusive, so anti-CD8, generally used in conjunction with anti-CD4. It is a useful marker for distinguishing helper/inducer T-lymphocytes, and most peripheral T-cell lymphomas are CD4+/CD8-. Anaplastic large cell lymphoma is usually CD4+ and CD8-, and in T-lymphoblastic lymphoma/leukemia, CD4 and CD8 are often co-expressed. CD8 is also found in littoral cell angioendothelioma of the spleen.

**Synonyms:** CD8 alpha chain, CD8A, MAL

### Product images:



Formalin-Fixed, Paraffin-Embedded Human tonsil (20X) stained with CD8 Antibody (Clone SPM548). Note Cell surface staining.