

## Product datasheet for **AM50173PU-S**

### Thyroglobulin (TG) Mouse Monoclonal Antibody [Clone ID: SPM221]

#### Product data:

Product Type: Primary Antibodies

Clone Name: SPM221

Applications: FC, IHC, WB

Recommended Dilution: **ELISA:** Use BSA free Antibody for coating.

**Flow Cytometry:** 0.5-1 µg/million cells.

**Western Blotting:** 0.5-1 µg/ml.

**Immunohistochemistry on Frozen and Formalin-Fixed Sections:** 0.5-1 µg/ml for 30 minutes at RT.

Staining of formalin-fixed tissues requires boiling tissue sections in 10mM citrate buffer, pH 6.0, for 10-20 min followed by cooling at RT for 20 minutes.

**Positive Control:** Thyroid.

Reactivity: Human, Mouse, Rat

Host: Mouse

Isotype: IgG1

Clonality: Monoclonal

Immunogen: Human thyroid follicular cells.

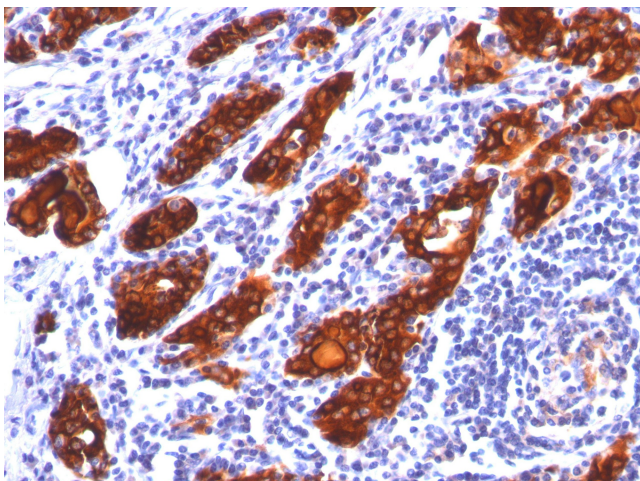
**Specificity:** Thyroglobulin is a 660kDa dimeric pre-protein with multiple glycosylation sites. It is produced by and processed within the thyroid gland to produce the hormone thyroxine and triiodothyronine. Prior to forming dimers, thyroglobulin monomers undergo conformational maturation in the endoplasmic reticulum. The vast majority of follicular carcinomas of the thyroid will give positive immunoreactivity for anti-thyroglobulin even though sometimes only focally. Poorly differentiated carcinomas of the thyroid are frequently anti-thyroglobulin negative. Adenocarcinomas of other-than-thyroid origin do not react with this antibody. This antibody is useful in identification of thyroid carcinoma of the papillary and follicular types. Presence of thyroglobulin in metastatic lesions establishes the thyroid origin of tumor. Anti-thyroglobulin, combined with anti-calcitonin, can identify medullary carcinomas of the thyroid. Furthermore, anti-thyroglobulin, combined with anti-TTF1, can be a reliable marker to differentiate between primary thyroid and lung neoplasms.

**Cellular Localization:** Cytoplasmic and secreted.



[View online »](#)

Formulation:	10mM PBS State: Purified State: Liquid purified IgG fraction from Bioreactor Concentrate Stabilizer: 0.05% BSA Preservative: 0.05% Sodium Azide
Concentration:	lot specific
Purification:	Protein A/G Chromatography
Conjugation:	Unconjugated
Storage:	Store undiluted at 2-8°C.
Stability:	Shelf life: one year from despatch.
Predicted Protein Size:	660 kDa (Dimeric Form)
Gene Name:	thyroglobulin
Database Link:	<a href="#">Entrez Gene 7038 Human P01266</a>
Synonyms:	Thyreoglobulin, TGN

**Product images:**

Formalin-paraffin thyroid stained with Thyroglobulin Antibody (Clone SPM221).