

## Product datasheet for **AM50171PU-S**

### LOC105369261 Mouse Monoclonal Antibody [Clone ID: SPM503]

#### Product data:

|                       |   |
|-----------------------|---|
| Product Type:         | Primary Antibodies  |
| Clone Name:           | SPM503  |
| Applications:         | FC, IF, IHC, IP, WB   |
| Recommended Dilution: | <b>ELISA:</b> Use BSA free Antibody for coating.<br><b>Flow Cytometry:</b> 0.5-1 µg/million cells.<br><b>Immunofluorescence:</b> 1-2 µg/ml.<br><b>Western Blotting:</b> 0.5-1 µg/ml.<br><b>Immunoprecipitation:</b> 1-2 µg/500 µg protein lysate.<br><b>Immunohistochemistry on Frozen and Formalin-Fixed Sections:</b> 0.5-1 µg/ml for 30 minutes at RT.<br>Staining of formalin-fixed tissues requires boiling tissue sections in 10mM citrate buffer, pH 6.0, for 10-20 min followed by cooling at RT for 20 minutes.<br><b>Positive Control:</b> Paracortex in a tonsil or a reactive lymph node.   |
| Reactivity:           | Human   |
| Host:                 | Mouse   |
| Isotype:              | IgG1  |
| Clonality:            | Monoclonal  |
| Immunogen:            | Myeloblastic KG1 cells.   |
| Specificity:          | It recognizes a cell surface glycoprotein of 95/115/135kDa (depending upon the extent of glycosylation), identified as CD43. 70-90% of T-cell lymphomas and from 22-37% of B-cell lymphomas express CD43.<br>No reactivity has been observed with reactive B-cells. So a B-lineage population that co-expresses CD43 is highly likely to be a malignant lymphoma, especially a low-grade lymphoma, rather than a reactive B-cell population. When CD43 antibody is used in combination with anti-CD20, effective immunophenotyping of the lymphomas in formalin-fixed tissues can be obtained. Co-staining of a lymphoid infiltrate with anti-CD20 and anti-CD43 argues against a reactive process and favors a diagnosis of lymphoma.<br><b>Cellular Localization:</b> Cell surface. |



[View online »](#)

**Formulation:** 10mM PBS  
 State: Purified  
 State: Liquid purified IgG fraction from Bioreactor Concentrate  
 Stabilizer: 0.05% BSA  
 Preservative: 0.05% Sodium Azide

**Concentration:** lot specific

**Purification:** Protein A/G Chromatography

**Conjugation:** Unconjugated

**Storage:** Store undiluted at 2-8°C.

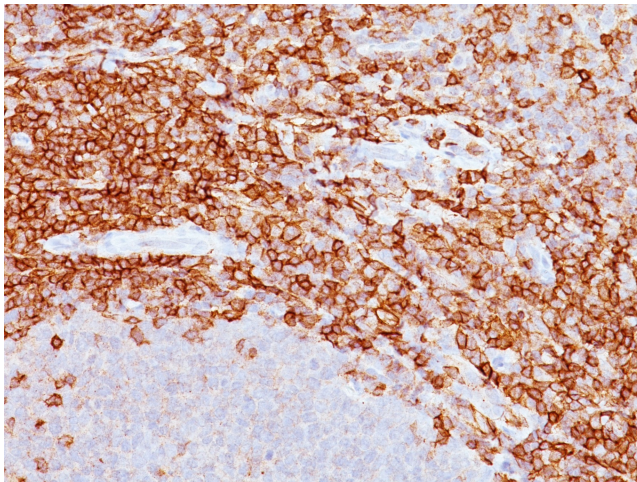
**Stability:** Shelf life: one year from despatch.

**Predicted Protein Size:** 95, 115, or 135 kDa

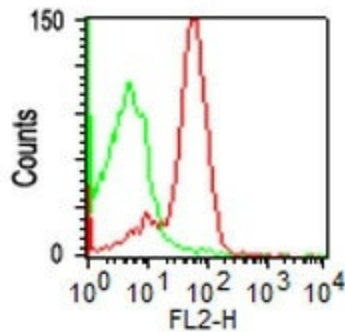
**Database Link:** [Entrez Gene 105369261 Human P16150](#)

**Synonyms:** Leukocyte sialoglycoprotein, Sialophorin, Galactoglycoprotein, SPN

**Product images:**



Formalin-paraffin spleen stained with CD43 Antibody (Clone SPM503).



CD43 expression by lymphocyte gated population of PBMC: PBMC stained either with CD43 Antibody (Clone SPM503) or isotype control.