

## Product datasheet for **AM50169PU-T**

### Melanoma gp100 (PMEL) Mouse Monoclonal Antibody [Clone ID: SPM286]

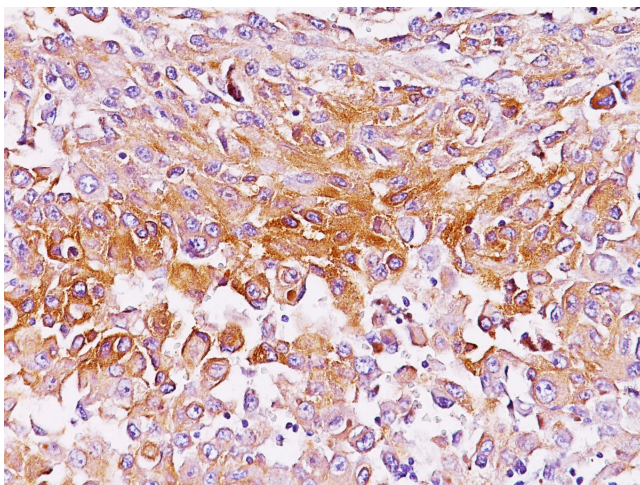
#### Product data:

Product Type:	Primary Antibodies
Clone Name:	SPM286
Applications:	FC, IF, IHC
Recommended Dilution:	<b>ELISA:</b> Use BSA free Antibody for coating. <b>Flow Cytometry:</b> 0.5-1 µg/million cells. <b>Immunofluorescence:</b> 1-2 µg/ml. <b>Immunohistochemistry on Frozen and Formalin-fixed Sections:</b> 1-2 µg/ml for 30 minutes at RT. Staining of formalin-fixed tissues requires boiling tissue sections in 10mM citrate buffer, pH 6.0, for 10-20 min followed by cooling at RT for 20 minutes. <b>Positive Control:</b> SK-MEL-28 cells or Melanoma.
Reactivity:	Human
Host:	Mouse
Isotype:	IgG2b
Clonality:	Monoclonal
Immunogen:	Membranes from a human melanoma metastasis.
Specificity:	By Immunohistochemistry, it specifically recognizes a protein in melanocytes and melanomas. This MAb reacts with junctional and blue nevus cells and variably with fetal and neonatal melanocytes. Intradermal nevi, normal adult melanocytes, and non-melanocytic cells are negative. It does not stain tumor cells of epithelial, lymphoid, glial, or mesenchymal origin. This Mab labels formalin-fixed, paraffin-embedded melanomas and other tumors showing melanocytic differentiation. <b>Cellular Localization:</b> Cytoplasmic.
Formulation:	10mM PBS State: Purified State: Liquid purified IgG fraction from Bioreactor Concentrate Stabilizer: 0.05% BSA Preservative: 0.05% Sodium Azide
Concentration:	lot specific
Purification:	Protein A/G Chromatography



[View online »](#)

Conjugation:	Unconjugated
Storage:	Store undiluted at 2-8°C.
Stability:	Shelf life: one year from despatch.
Predicted Protein Size:	90-100 kDa
Gene Name:	premelanosome protein
Database Link:	<a href="#">Entrez Gene 6490 Human P40967</a>
Synonyms:	SILV, D12S53E, PMEL17, ME20-M

**Product images:**

Formalin-Paraffin Human melanoma tissue stained with gp100 Antibody (Clone SPM286).