

Product datasheet for **AM50168PU-T**

Melanoma gp100 (PMEL) Mouse Monoclonal Antibody [Clone ID: SPM142]

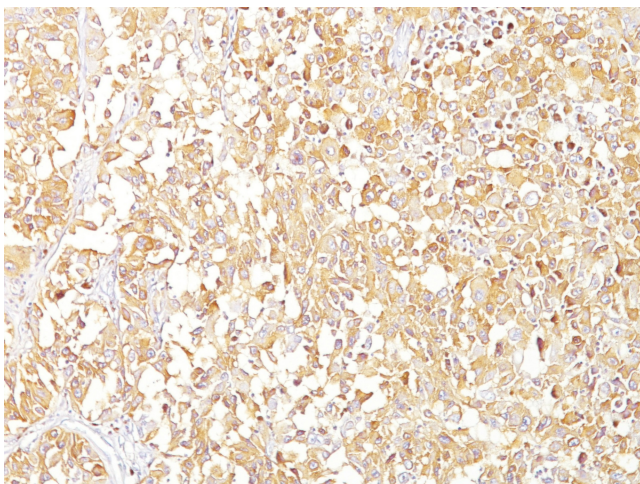
Product data:

Product Type:	Primary Antibodies
Clone Name:	SPM142
Applications:	FC, IF, IHC, IP, WB
Recommended Dilution:	ELISA: Use BSA free Antibody for coating. Flow Cytometry: 0.5-1 µg/million cells. Immunofluorescence: 0.5-1 µg/ml. Western Blotting: 0.5-1 µg/ml. Immunoprecipitation: 0.5-1 µg/500 µg protein lysate. Immunohistochemistry on Frozen and Formalin-Fixed Sections: 0.5-1.0 µg/ml for 30 minutes at RT. Staining of formalin-fixed tissues requires boiling tissue sections in 10mM citrate buffer, pH 6.0, for 10-20 min followed by cooling at RT for 20 minutes. Positive Control: SK-MEL-28 cells or Melanoma.
Reactivity:	Human
Host:	Mouse
Isotype:	IgG1
Clonality:	Monoclonal
Immunogen:	Extract of pigmented melanoma metastases from lymph nodes.
Specificity:	By Immunohistochemistry, it specifically recognizes a protein in melanocytes and melanomas. This Monoclonal Antibody reacts with junctional and blue nevus cells and variably with fetal and neonatal melanocytes. Intradermal nevi, normal adult melanocytes, and non-melanocytic cells are negative. It does not stain tumor cells of epithelial, lymphoid, glial, or mesenchymal origin. Metastatic amelanotic melanoma can often be confused with a variety of poorly differentiated carcinomas, large cell lymphomas, and sarcomas using H & E stains alone. It is also difficult to differentiate melanoma from spindle cell carcinomas and various types of mesenchymal neoplasms. It stains fetal and neonatal melanocytes, junctional and blue nevus cells, and malignant melanoma. This Monoclonal Antibody also stains Angiomyolipoma (PEComa). Cellular Localization: Cytoplasmic. Negative Species: Dog and Rat.

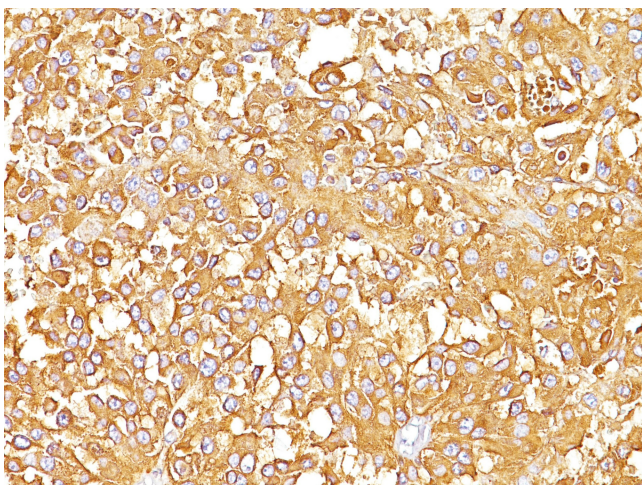


[View online »](#)

Formulation:	10mM PBS State: Purified State: Liquid purified IgG fraction from Bioreactor Concentrate Stabilizer: 0.05% BSA Preservative: 0.05% Sodium Azide
Concentration:	lot specific
Purification:	Protein A/G Chromatography
Conjugation:	Unconjugated
Storage:	Store undiluted at 2-8°C.
Stability:	Shelf life: one year from despatch.
Predicted Protein Size:	90-100 kDa
Gene Name:	premelanosome protein
Database Link:	Entrez Gene 6490 Human P40967
Synonyms:	SILV, D12S53E, PMEL17, ME20-M

Product images:

Formalin-Fixed, Paraffin-Embedded Human Melanoma (10X) stained with gp100 / Melanosome Antibody (Clone SPM142).



Formalin-Fixed, Paraffin-Embedded Human Melanoma (20X) stained with gp100 / Melanosome Antibody (Clone SPM142).