

Product datasheet for **AM50164PU-S**

BCL2 Mouse Monoclonal Antibody [Clone ID: SPM530]

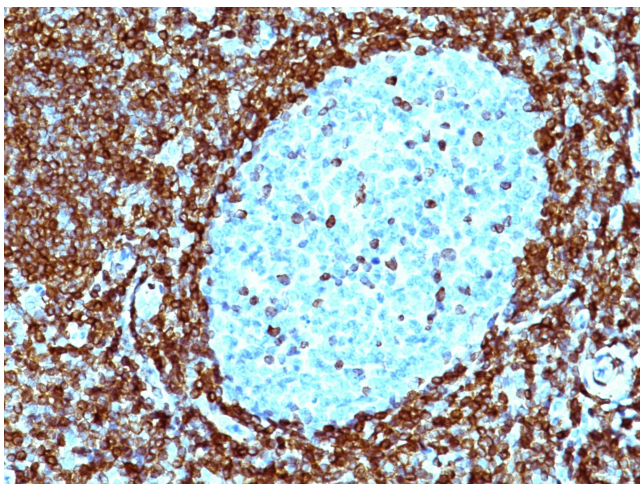
Product data:

Product Type:	Primary Antibodies
Clone Name:	SPM530
Applications:	FC, IF, IHC, IP, WB
Recommended Dilution:	ELISA: Use BSA free Antibody for coating. Flow Cytometry: 0.5-1 µg/million cells. Immunofluorescence: 0.5-1 µg/ml. Western Blotting: 0.5-1 µg/ml. Immunoprecipitation: 0.5-1 µg/500 µg protein lysate. Immunohistochemistry on Frozen and Formalin-fixed Sections: 0.5-1.0 µg/ml for 30 minutes at RT. Staining of formalin-fixed tissues is enhanced by boiling tissue sections in 1mM EDTA Buffer, pH 7.5-8.5, for 10-20 min followed by cooling at RT for 20 minutes. Positive Control: Jurkat, K562, HL-60, or HeLa Cells. Tonsil or follicular lymphomas.
Reactivity:	Human
Host:	Mouse
Isotype:	IgG1
Clonality:	Monoclonal
Immunogen:	A synthetic peptide, aa41-54 (GAAPAPGIFSSQPG-Cys) of human Bcl-2 protein.
Specificity:	This antibody recognizes a protein of 25-26kDa, identified as the bcl-2alpha oncoprotein. It shows no cross-reaction with Bcl-x or Bax protein. Expression of bcl-2alpha oncoprotein inhibits the programmed cell death (apoptosis). In most follicular lymphomas, neoplastic germinal centers express high levels of bcl-2alpha protein, whereas the normal or hyperplastic germinal centers are negative. Consequently, this antibody is valuable when distinguishing between reactive and neoplastic follicular proliferation in lymph node biopsies. It may also be used in distinguishing between those follicular lymphomas that express bcl-2 protein and the small number in which the neoplastic cells are bcl-2 negative. Cellular Localization: Outer mitochondrial membranes and endoplasmic reticulum as well as nuclear membranes.

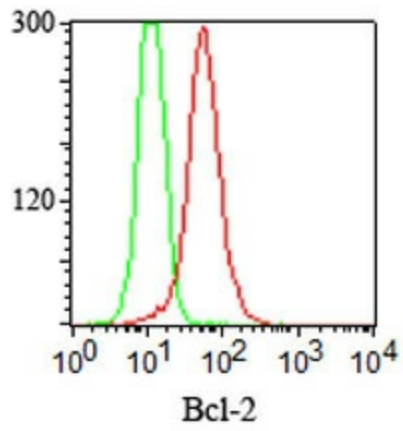


[View online »](#)

Formulation:	10mM PBS State: Purified State: Liquid purified IgG fraction from Bioreactor Concentrate Stabilizer: 0.05% BSA Preservative: 0.05% Sodium Azide
Concentration:	lot specific
Purification:	Protein A/G Chromatography
Conjugation:	Unconjugated
Storage:	Store undiluted at 2-8°C.
Stability:	Shelf life: one year from despatch.
Predicted Protein Size:	25-26 kDa
Gene Name:	B-cell CLL/lymphoma 2
Database Link:	Entrez Gene 596 Human P10415
Synonyms:	BCL2, Bcl-2 alpha

Product images:

Formalin-paraffin non-Hodgkin's lymphoma stained with Bcl-2 Antibody (Clone SPM530). Note nuclear membrane & cytoplasmic staining.



Intracellular staining of Bcl-2 in Jurkat cells using Antibody (Clone SPM530) (red) and isotype control (green).