

## Product datasheet for **AM50151PU-S**

### PCNA Mouse Monoclonal Antibody [Clone ID: SPM350]

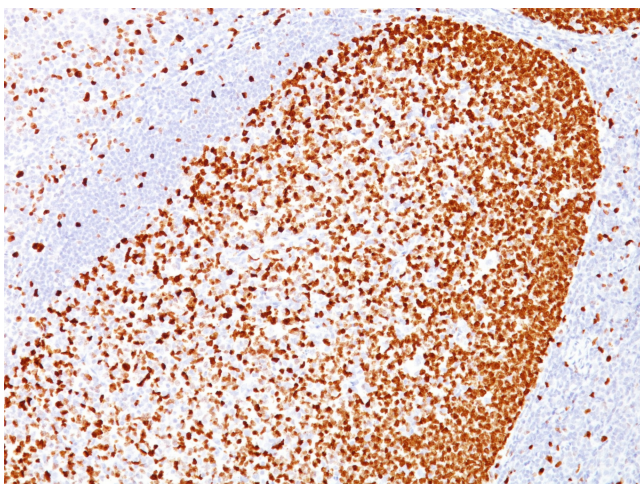
#### Product data:

Product Type:	Primary Antibodies
Clone Name:	SPM350
Applications:	FC, IF, IHC, IP, WB
Recommended Dilution:	<b>ELISA:</b> Use BSA free Antibody for coating. <b>Flow Cytometry:</b> 0.5-1 µg/million cells. <b>Immunofluorescence:</b> 0.5-1 µg/ml. <b>Western Blotting:</b> 0.5-1 µg/ml. <b>Immunoprecipitation:</b> 0.5-1 µg/500 µg protein lysate. <b>Immunohistochemistry on Frozen and Formalin-Fixed Sections:</b> 0.25-0.5 µg/ml for 30 minutes at RT. Staining of formalin-fixed tissues requires boiling tissue sections in 10mM Citrate Buffer, pH 6.0, for 10-20 min followed by cooling at RT for 20 minutes. <b>Positive Control:</b> Tonsil or reactive lymph node.
Reactivity:	Chicken, Drosophila, Human, Mouse, Rat, Yeast, Zebrafish
Host:	Mouse
Isotype:	IgG2a
Clonality:	Monoclonal
Immunogen:	Rat PCNA/Protein A fusion protein.
Specificity:	Recognizes a non-histone protein of 36kDa, which is identified as proliferating cell nuclear antigen (PCNA). It is also known as cyclin or polymerase delta auxiliary protein. Elevated expression of PCNA/cyclin has been shown in the nucleus during late G1 phase immediately before the onset of DNA synthesis, becoming maximal during S-phase and declining during G2 and M phases. This MAb is excellent for multiple applications. <b>Cellular Localization:</b> Predominantly nuclear, some cytoplasmic.
Formulation:	10mM PBS State: Purified State: Liquid purified IgG fraction from Bioreactor Concentrate Stabilizer: 0.05% BSA Preservative: 0.05% Sodium Azide



[View online »](#)

Concentration:	lot specific
Purification:	Protein A/G Chromatography
Conjugation:	Unconjugated
Storage:	Store undiluted at 2-8°C.
Stability:	Shelf life: one year from despatch.
Predicted Protein Size:	36 kDa
Gene Name:	proliferating cell nuclear antigen
Database Link:	<a href="#">Entrez Gene 5111 Human P12004</a>
Synonyms:	Cyclin

**Product images:**

Formalin-paraffin human tonsil stained with PCNA Antibody (Clone SPM350)