

## Product datasheet for **AM50148PU-T**

### **Nkx2.2 (NKX2-2) Mouse Monoclonal Antibody [Clone ID: SPM564]**

#### Product data:

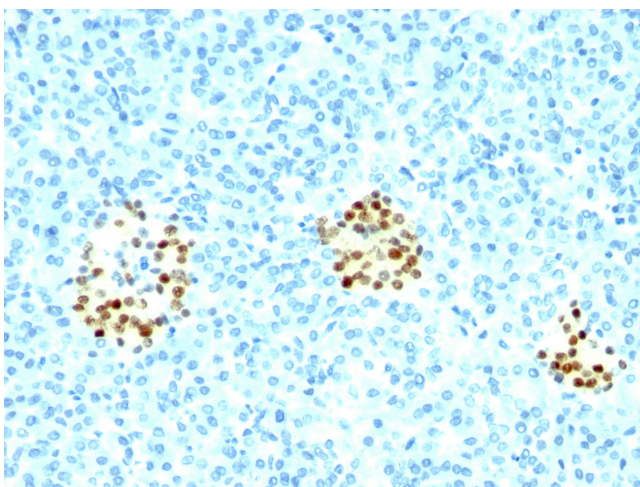
Product Type:	Primary Antibodies
Clone Name:	SPM564
Applications:	FC, IF, IHC
Recommended Dilution:	<b>Flow Cytometry:</b> 0.5-1 µg/million cells. <b>Immunofluorescence:</b> 1-2 µg/ml. <b>Immunohistochemistry on Formalin-Fixed Paraffin Sections:</b> 0.5-1.0 µg/ml for 30 minutes at RT. Staining of formalin-fixed tissues requires boiling tissue sections in 10mM Citrate Buffer, pH 6.0, for 10-20 min followed by cooling at RT for 20 minutes. <b>Positive Control:</b> Pancreas or Ewing sarcoma.
Reactivity:	Chicken, Human, Mouse, Rat
Host:	Mouse
Isotype:	IgG2b
Clonality:	Monoclonal
Immunogen:	Human NKX2.2 recombinant protein.
Specificity:	Expression of NKX2.2 has been found in neuroendocrine tumors of the gut, making it a potential marker for the study of gastrointestinal neuroendocrine tumors. More recently, NKX2.2 protein was identified as a target of EWS-FLI-1, the fusion protein specific to Ewing sarcoma, and was shown to be differentially upregulated in Ewing sarcoma on the basis of array-based gene expression analysis. It acts as a valuable marker for Ewing sarcoma, with a sensitivity of 93% and a specificity of 89%, and aids in the differential diagnosis of small round cell tumors. <b>Cellular Localization:</b> Nuclear.
Formulation:	10mM PBS State: Purified State: Liquid purified IgG fraction from Bioreactor Concentrate Stabilizer: 0.05% BSA Preservative: 0.05% Sodium Azide
Concentration:	lot specific
Purification:	Protein A/G Chromatography



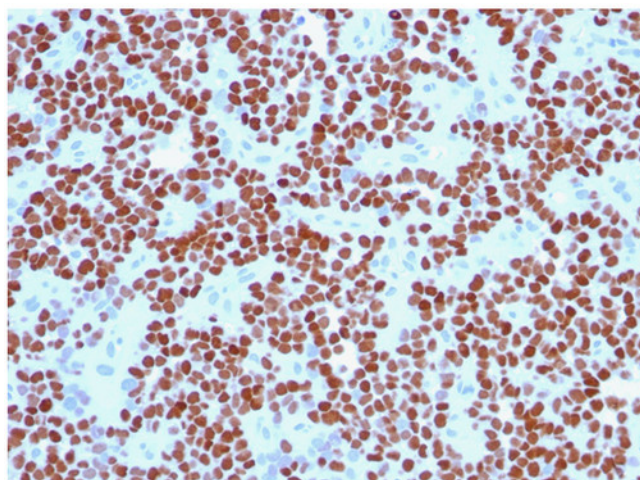
[View online »](#)

Conjugation:	Unconjugated
Storage:	Store undiluted at 2-8°C.
Stability:	Shelf life: one year from despatch.
Predicted Protein Size:	40-50 kDa
Gene Name:	NK2 homeobox 2
Database Link:	<a href="#">Entrez Gene 4821 Human O95096</a>
Synonyms:	NKX2.2, NKX2B

### Product images:



Formalin-paraffin Ewing's sarcoma stained with NKX2.2 Antibody (Clone SPM564).



Formalin-paraffin pancreas stained with NKX2.2 Antibody (Clone SPM564).