

Product datasheet for **AM50141PU-T**

EMA (MUC1) Mouse Monoclonal Antibody [Clone ID: SPM533]

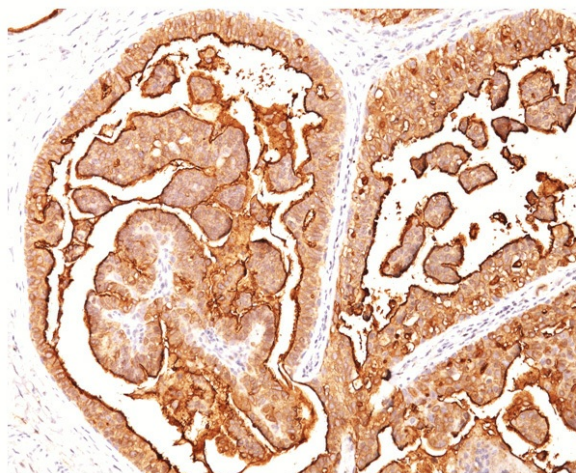
Product data:

Product Type:	Primary Antibodies
Clone Name:	SPM533
Applications:	FC, IF, IHC, IP, WB
Recommended Dilution:	ELISA: Use BSA free Antibody for coating. Flow Cytometry: 0.5-1 µg/million cells. Immunofluorescence: 0.5-1 µg/ml. Western Blotting: 0.5-1 µg/ml. Immunoprecipitation: 0.5-1 µg/500 µg protein lysate. Immunohistochemistry on Frozen and Formalin-fixed Sections: 0.5-1.0 µg/ml for 30 minutes at RT. No special pretreatment is required for staining of formalin/paraffin tissues. Positive Control: Breast or colon carcinoma.
Reactivity:	Human
Host:	Mouse
Isotype:	IgG2a
Clonality:	Monoclonal
Immunogen:	Delipidated extract of human milk fat globule membranes.
Specificity:	In Western blotting, it recognizes proteins in MW range of 265-400kDa, identified as different glycoforms of EMA. This protein is proteolytically cleaved into alpha and beta subunits that form a heterodimeric complex. The N-terminal alpha subunit and the C-terminal beta subunit. The alpha subunit has cell adhesive properties. It can act both as an adhesion and an anti-adhesion protein. EMA may provide a protective layer on epithelial cells against bacterial and enzyme attack. The beta subunit contains a C-terminal domain, which is involved in cell signaling, through phosphorylations and protein-protein interactions. In immunohistochemical assays, it superbly stains routine formalin/paraffin carcinomas. Antibody to EMA is useful as a pan-epithelial marker for detecting early metastatic loci of carcinoma in bone marrow or liver. Cellular Localization: Cytoplasmic & cell surface.



[View online »](#)

Formulation:	10mM PBS State: Purified State: Liquid purified IgG fraction from Bioreactor Concentrate Stabilizer: 0.05% BSA Preservative: 0.05% Sodium Azide
Concentration:	lot specific
Purification:	Protein A/G Chromatography
Conjugation:	Unconjugated
Storage:	Store undiluted at 2-8°C.
Stability:	Shelf life: one year from despatch.
Predicted Protein Size:	265-400 kDa
Gene Name:	mucin 1, cell surface associated
Database Link:	Entrez Gene 4582 Human P15941
Synonyms:	MUC-1, PEMT, Episialin, EMA, H23AG, PUM, DF3, CA 15-3

Product images:

Formalin-Paraffin breast carcinoma stained with CD227 / Mucin-1 / MUC1 Antibody (Clone SPM533).