

Product datasheet for **AM50140PU-T**

EMA (MUC1) Mouse Monoclonal Antibody [Clone ID: SPM132]

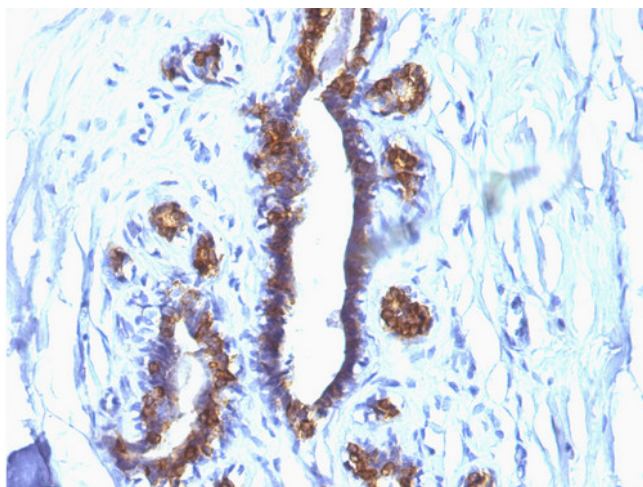
Product data:

Product Type:	Primary Antibodies
Clone Name:	SPM132
Applications:	FC, IF, IHC
Recommended Dilution:	Flow Cytometry: 0.5-1 µg/million cells. Immunofluorescence: 1-2 µg/ml. Immunohistochemistry on Formalin-Fixed Paraffin Sections: 0.5-1.0 µg/ml for 30 minutes at RT. No special pretreatment is required for staining of formalin/paraffin tissues. Positive Control: MCF-7 or MDA-231 cells. Breast or colon carcinoma.
Reactivity:	Human
Host:	Mouse
Isotype:	IgG1
Clonality:	Monoclonal
Immunogen:	Human milk fat globule membranes.
Specificity:	This Monoclonal Antibody reacts with the DTRP epitope in the tandem repeats. The alpha subunit has cell adhesive properties. It can act both as an adhesion and an anti-adhesion protein. EMA may provide a protective layer on epithelial cells against bacterial and enzyme attack. The beta subunit contains a C-terminal domain, which is involved in cell signaling, through phosphorylations and protein-protein interactions. In immunohistochemical assays, it superbly stains routine formalin/paraffin carcinoma tissues. Antibody to EMA is useful as a pan-epithelial marker for detecting early metastatic loci of carcinoma in bone marrow or liver. Cellular Localization: Cytoplasmic and cell surface.
Formulation:	10mM PBS State: Purified State: Liquid purified IgG fraction from Bioreactor Concentrate Stabilizer: 0.05% BSA Preservative: 0.05% Sodium Azide
Concentration:	lot specific
Purification:	Protein A/G Chromatography



[View online »](#)

Conjugation:	Unconjugated
Storage:	Store undiluted at 2-8°C.
Stability:	Shelf life: one year from despatch.
Predicted Protein Size:	265-400 kDa
Gene Name:	mucin 1, cell surface associated
Database Link:	Entrez Gene 4582 Human P15941
Synonyms:	MUC-1, PEMT, Episialin, EMA, H23AG, PUM, DF3, CA 15-3

Product images:

Formalin-paraffin human breast cancer stained with D227 / Mucin-1 / MUC1 Antibody (Clone SPM132).