

Product datasheet for **AM50138PU-S**

MAGE 1 (MAGEA1) Mouse Monoclonal Antibody [Clone ID: SPM282]

Product data:

| | |
|-----------------------|---|
| Product Type: | Primary Antibodies |
| Clone Name: | SPM282 |
| Applications: | FC, IF, IHC, IP, WB |
| Recommended Dilution: | ELISA: Use BSA free Antibody for coating. Flow Cytometry: 0.5-1 µg/million cells. Immunofluorescence: 1-2 µg/ml. Immunohistochemistry on Frozen and Formalin-fixed Sections: 0.5-1.0 µg/ml for 30 minutes at RT. Staining of formalin-fixed tissues requires boiling tissue sections in 10mM Citrate Buffer, pH 6.0, for 10-20 min followed by cooling at RT for 20 minutes. Positive Control: Melanoma cell lines. Melanomas, gliomas, neuroblastoma, non-small cell lung cancer, breast, gastric, colorectal, ovarian, and renal cell carcinomas. |
| Reactivity: | Canine, Human, Rat |
| Host: | Mouse |
| Isotype: | IgG1 |
| Clonality: | Monoclonal |
| Immunogen: | Human MAGE-A1 full length recombinant protein. |
| Specificity: | Recognizes a protein of 42-46kDa, identified as MAGE-1. This MAb does not cross-react with MAGE-2, -3, -4, -6 -9, -10, -or -12 protein. Cellular Localization: Cytoplasmic. |
| Formulation: | 10mM PBS State: Purified State: Liquid purified IgG fraction from Bioreactor Concentrate Stabilizer: 0.05% BSA Preservative: 0.05% Sodium Azide |
| Concentration: | lot specific |
| Purification: | Protein A/G Chromatography |
| Conjugation: | Unconjugated |
| Storage: | Store undiluted at 2-8°C. |



[View online »](#)

Stability: Shelf life: one year from despatch.

Predicted Protein Size: 42-46 kDa

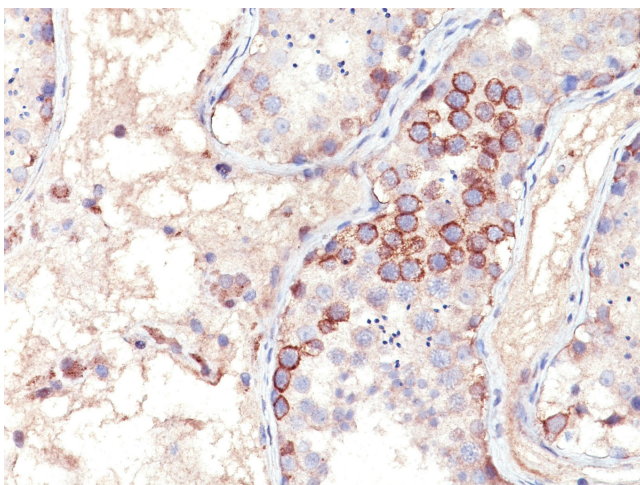
Gene Name: MAGE family member A1

Database Link: [Entrez Gene 4100 Human P43355](#)

Background: Human malignant neoplasms carry rejection antigens that are recognized by the patients' autologous, tumor directed and specific, cytolytic, CD8+ T lymphocyte clones (CTL). The MAGE family of genes codes an important group of antigens. It was identified that melanomas and primary glial brain tumors express common melanoma associated antigens (MAAs). Because MAGE-1 is expressed on a significant proportion of human neoplasms of various histological types (melanoma, brain tumors of glial origin, neuroblastoma, non-small cell lung cancer, breast, gastric, colorectal, ovarian, renal cell carcinomas) and not on normal tissues, the encoded antigen may serve as a marker of early detection and target for cancer immunotherapy.

Synonyms: MAGE 1, MAGE1, Melanoma-associated antigen 1, MAGEA1, MAGE1A

Product images:



Formalin-paraffin human testis stained with MAGE-1 Antibody (Clone SPM282).