

Product datasheet for **AM50137PU-S**

EPCAM Mouse Monoclonal Antibody [Clone ID: SPM134]

Product data:

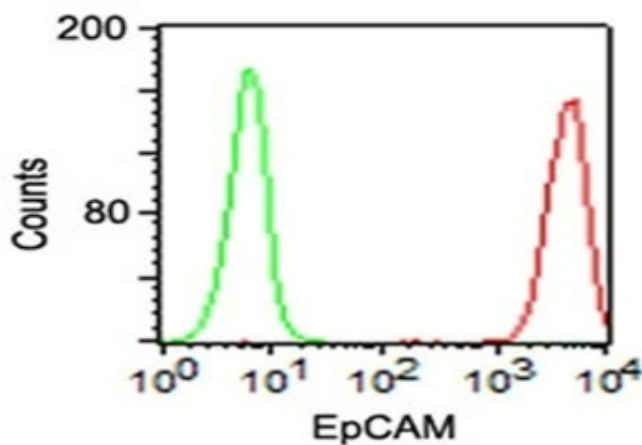
Product Type:	Primary Antibodies
Clone Name:	SPM134
Applications:	FC, IF, IHC, IP, WB
Recommended Dilution:	Flow Cytometry: 0.5-1 µg/million cells. Immunofluorescence: 1-2 µg/ml. Western Blotting: 0.5-1 µg/ml. Immunoprecipitation: 1-2 µg/500 µg protein lysate. Immunohistochemistry on Formalin-Fixed Paraffin Sections: 0.5-1.0 µg/ml for 30 minutes at RT. Staining of formalin/paraffin tissues REQUIRES digestion of tissue sections with pepsin at 1mg/ml Tris-HCl, pH 2.0 for 15 min at RT or 10 min at 37°C. Positive Control: HT29 cells or breast tumor.
Reactivity:	Human
Host:	Mouse
Isotype:	IgG1
Clonality:	Monoclonal
Immunogen:	Small cell lung carcinoma cells.
Specificity:	EGP40 is a 40-43kDa transmembrane epithelial glycoprotein, also identified as epithelial specific antigen (ESA), or epithelial cellular adhesion molecule (Ep-CAM). It is expressed on baso-lateral cell surface in most simple epithelia and a vast majority of carcinomas. This antibody has been used to distinguish adenocarcinoma from pleural mesothelioma and hepatocellular carcinoma. This antibody is also useful in distinguishing serous carcinomas of the ovary from mesothelioma. Cellular Localization: Cell surface. Negative Species: Rat.
Formulation:	10mM PBS State: Purified State: Liquid purified IgG fraction from Bioreactor Concentrate Stabilizer: 0.05% BSA Preservative: 0.05% Sodium Azide



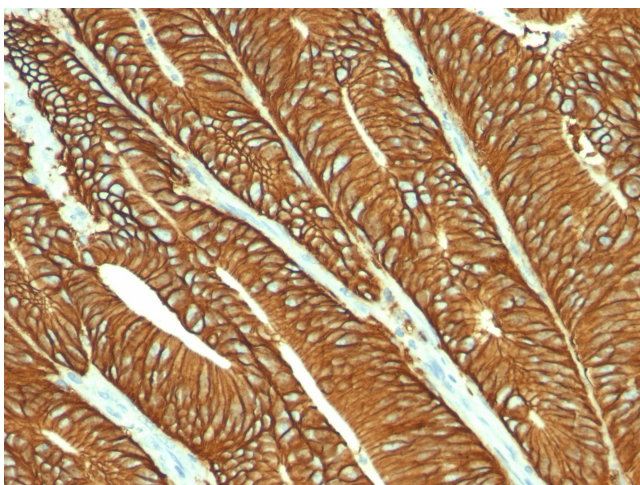
[View online »](#)

Concentration:	lot specific
Purification:	Protein A/G Chromatography
Conjugation:	Unconjugated
Storage:	Store undiluted at 2-8°C.
Stability:	Shelf life: one year from despatch.
Predicted Protein Size:	40-43 kDa
Gene Name:	epithelial cell adhesion molecule
Database Link:	Entrez Gene 4072 Human P16422
Synonyms:	Ep-CAM, Epithelial cell adhesion molecule, GA733-2, EGP314, KSA, TROP1, Trop-1, M1S2, M4S1, MIC18

Product images:



Surface staining of HT29 cells using Ep-CAM Antibody (Clone SPM134) (red) and isotype control antibody (green).



Formalin-Paraffin colon carcinoma stained with Ep-CAM Antibody (Clone SPM134).