

## Product datasheet for **AM50130PU-T**

### Cytokeratin 14 (KRT14) Mouse Monoclonal Antibody [Clone ID: SPM263]

#### Product data:

Product Type:	Primary Antibodies
Clone Name:	SPM263
Applications:	FC, IF, IHC, IP, WB
Recommended Dilution:	<b>ELISA:</b> Use BSA free Antibody for coating. <b>Flow Cytometry:</b> 0.5-1 µg/million cells. <b>Immunofluorescence:</b> 1-2 µg/ml. <b>Western Blotting:</b> 0.25-0.5 µg/ml. <b>Immunoprecipitation:</b> 1-2 µg/500 µg protein lysate. <b>Immunohistochemistry on Frozen and Formalin-fixed Sections:</b> 0.5-1.0 µg/ml for 30 minutes at RT. Staining of formalin-fixed tissues requires boiling tissue sections in 10mM Citrate Buffer, pH 6.0, for 10-20 min followed by cooling at RT for 20 minutes. <b>Positive Control:</b> A431 cells, Skin or Squamous cell carcinoma.
Reactivity:	Human, Mouse, Rat
Host:	Mouse
Isotype:	IgG3
Clonality:	Monoclonal
Immunogen:	A synthetic peptide of 15 amino acid from the C-terminus of human keratin 14.
Specificity:	Cytokeratin 14 (CK14) belongs to the type I (or A or acidic) subfamily of low molecular weight keratins and exists in combination with keratin 5 (type II or B or basic). CK14 is found in basal cells of squamous epithelia, some glandular epithelia, myoepithelium, and mesothelial cells. Anti-CK14 is useful in differentiating squamous cell carcinomas from poorly differentiated epithelial tumors. Anti-CK14 is one of the specific basal markers for distinguishing between basal and non-basal subtypes of breast carcinomas. Anti-CK14 is also a good marker for differentiation of intraductal from invasive salivary duct carcinoma by the positive staining of basal cells surrounding the in-situ neoplasm as well as for differentiation of benign prostate from prostate carcinoma. Furthermore, this antibody has been useful in separating oncocytic tumors of the kidney from its renal mimics, and in identifying metaplastic carcinomas of the breast. <b>Cellular Localization:</b> Cytoplasmic.



[View online »](#)

**Formulation:** 10mM PBS  
State: Purified  
State: Liquid purified IgG fraction from Bioreactor Concentrate  
Stabilizer: 0.05% BSA  
Preservative: 0.05% Sodium Azide

**Concentration:** lot specific

**Conjugation:** Unconjugated

**Storage:** Store undiluted at 2-8°C.

**Stability:** Shelf life: one year from despatch.

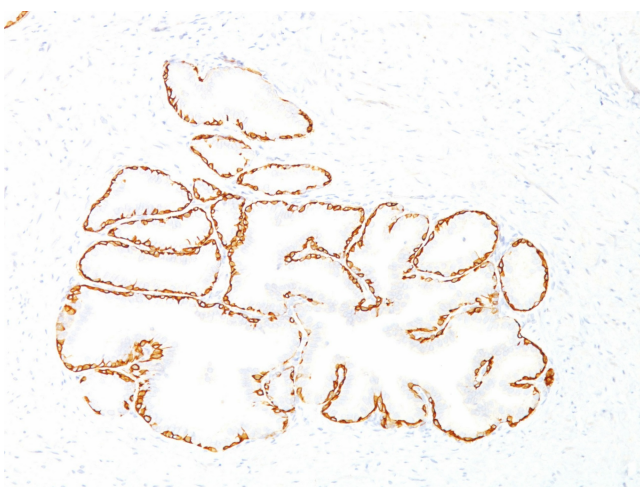
**Predicted Protein Size:** 50 kDa

**Gene Name:** keratin 14

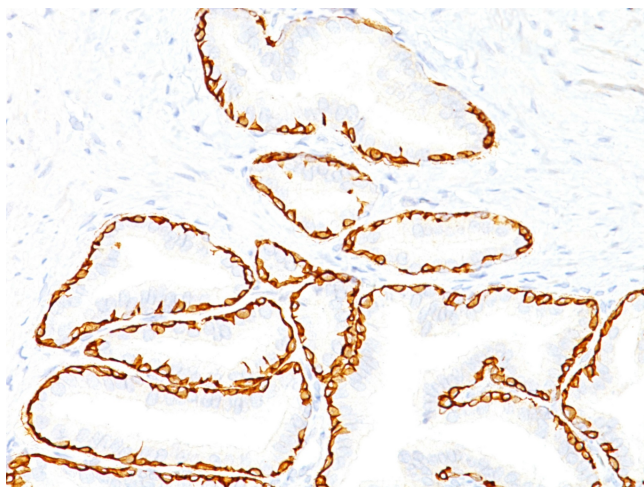
**Database Link:** [Entrez Gene 3861 Human P02533](#)

**Synonyms:** Cytokeratin-14, CK14, Keratin 14, K14, KRT14

### Product images:



Formalin-Paraffin prostate (10X) stained with Cytokeratin 14 Antibody (Clone SPM263).



Formalin-Paraffin prostate (20X) stained with Cytokeratin 14 Antibody (Clone SPM263).