

Product datasheet for **AM50123PU-T**

Insulin (INS) Mouse Monoclonal Antibody [Clone ID: SPM139]

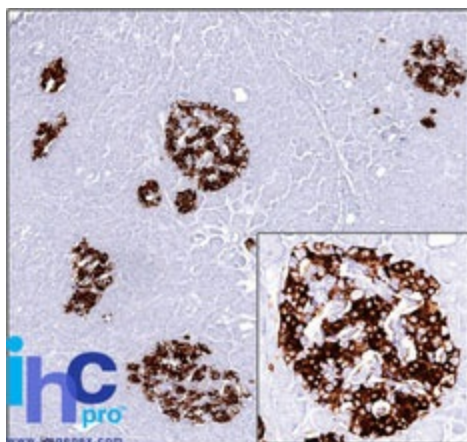
Product data:

Product Type:	Primary Antibodies
Clone Name:	SPM139
Applications:	FC, IF, IHC, IP, WB
Recommended Dilution:	ELISA: Use Antibody without BSA for Coating. Flow Cytometry: 0.5-1 µg/10 ⁶ cells. Immunofluorescence: 1-2 µg/ml. Western Blot: 0.5-1 µg/ml. Immunoprecipitation: 1-2 µg/500 µg protein lysate. Immunohistochemistry on Frozen and Formalin-Fixed Paraffin Sections: 0.5-1 µg/ml for 30 minutes at RT. No special pretreatment is required for staining of formalin/paraffin tissues. Positive Control: Pancreas.
Reactivity:	Bovine, Human, Porcine
Host:	Mouse
Isotype:	IgG1
Clonality:	Monoclonal
Immunogen:	Full length (1-84 amino acid) purified pig insulin, conjugated to KLH.
Specificity:	Recognizes a polypeptide which is identified as insulin, a 51-amino acid polypeptide composed of A and B chains connected through the C-peptide. Proinsulin, which has very little biological activity, is cleaved by proteases within its cell of origin into the insulin molecule and the C-terminal basic residue. Insulin enhances membrane transport of glucose, amino acids, and certain ions. It also promotes glycogen storage, formation of triglycerides, and synthesis of proteins and nucleic acids. Deficiency of insulin results in diabetes mellitus. The main storage site for insulin is the pancreatic islets. Antibodies to insulin are important as beta-cell and insulinoma marker. Cellular Localization: Cytoplasmic. Negative Species: Mouse, Rat.



[View online »](#)

Formulation:	10mM PBS State: Purified State: Liquid purified IgG fraction from Bioreactor Concentrate Stabilizer: 0.05% BSA Preservative: 0.05% Sodium Azide
Concentration:	lot specific
Purification:	Protein A/G Chromatography
Conjugation:	Unconjugated
Storage:	Store undiluted at 2-8°C.
Stability:	Shelf life: one year from despatch.
Predicted Protein Size:	6 kDa
Gene Name:	insulin
Database Link:	Entrez Gene 3630 Human P01308
Synonyms:	INS

Product images:

Formalin-Paraffin Human pancreas stained with Insulin Antibody (Clone SPM139). Note cytoplasmic staining of cells.