

Product datasheet for **AM50120PU-T**

Human Kappa Light Chain Mouse Monoclonal Antibody [Clone ID: SPM558]

Product data:

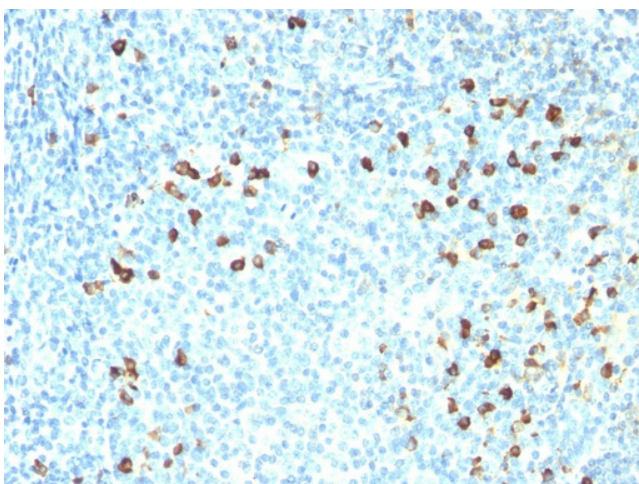
Product Type:	Primary Antibodies
Clone Name:	SPM558
Applications:	FC, IHC, IP, WB
Recommended Dilution:	<p>ELISA: Use Antibody without BSA for Coating.</p> <p>Flow Cytometry: 0.5-1 µg/10⁶ cells.</p> <p>Western Blot: 0.5-1 µg/ml.</p> <p>Immunoprecipitation: 1-2 µg/500 µg protein lysate.</p> <p>Immunohistochemistry on Frozen and Formalin-Fixed Paraffin Sections: 0.5-1 µg/ml for 30 min at RT.</p> <p>Staining of formalin-fixed tissues requires boiling tissue sections in 10mM Citrate buffer, pH 6.0, for 10-20 min followed by cooling at RT for 20 min.</p> <p>Positive Control: 293T, Raji or hPBL cells, Tonsil or Spleen.</p>
Reactivity:	Human
Host:	Mouse
Isotype:	IgG1
Clonality:	Monoclonal
Immunogen:	Recombinant Human Ig kappa chain.
Specificity:	<p>This Monoclonal Antibody is specific to Kappa Light chain of immunoglobulin and shows no cross-reaction with Lambda Light chain or any of the five heavy chains. In mammals, the two light chains in an antibody are always identical, with only one type of light chain, kappa or lambda. The ratio of Kappa to Lambda is 70:30. However, with the occurrence of multiple myeloma or other B-cell malignancies this ratio is disturbed. Antibody to the kappa light chain is reportedly useful in the identification of leukemias, plasmacytomas, and certain non-Hodgkin's lymphomas. Demonstration of clonality in lymphoid infiltrates indicates that the infiltrate is malignant.</p> <p>Cellular Localization: Cell Surface, cytoplasmic and secreted.</p>



[View online »](#)

Formulation:	10mM PBS
	State: Purified
	State: Liquid purified IgG fraction from Bioreactor Concentrate
	Stabilizer: 0.05% BSA
	Preservative: 0.05% Sodium Azide
Concentration:	lot specific
Purification:	Protein A/G Chromatography
Conjugation:	Unconjugated
Storage:	Store undiluted at 2-8°C.
Stability:	Shelf life: one year from despatch.
Predicted Protein Size:	~22.5 kDa
Synonyms:	HCAK1, Ig Kappa Chain C Region, IGKC, Immunoglobulin KM

Product images:



Formalin-Fixed, Paraffin-Embedded Human tonsil stained with Kappa Light Chain Antibody Cat.-No AM50120PU (Clone SPM558). Note cell membrane & cytoplasmic staining.