

Product datasheet for **AM50109PU-S**

MelanA (MLANA) Mouse Monoclonal Antibody [Clone ID: SPM540]

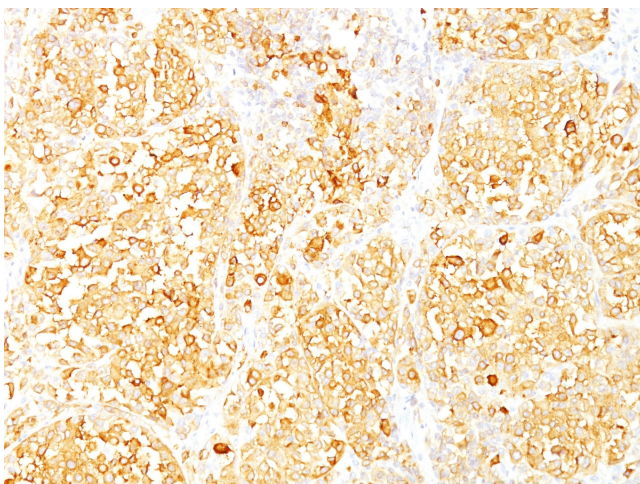
Product data:

Product Type:	Primary Antibodies
Clone Name:	SPM540
Applications:	FC, IF, IHC, IP, WB
Recommended Dilution:	ELISA: Use Antibody without BSA for Coating. Flow Cytometry: 0.5-1 µg/10 ⁶ cells. Immunofluorescence: 1-2 µg/ml. Western Blot: 0.5-1 µg/ml. Immunoprecipitation: 0.5-1 µg/500 µg protein lysate. Immunohistochemistry on Frozen and Formalin-Fixed Paraffin Sections: 0.5-1 µg/ml for 30 minutes at RT. Staining of formalin-fixed tissues requires boiling tissue sections in 10mM Citrate buffer, pH 6.0, for 10-20 min followed by cooling at RT for 20 minutes. Positive Control: SK-MEL-13 and SK-MEL-19 Melanoma cell lines; Melanomas.
Reactivity:	Human, Mouse, Rat
Host:	Mouse
Isotype:	IgG2b
Clonality:	Monoclonal
Immunogen:	Recombinant hMART-1 protein.
Specificity:	This antibody recognizes a protein doublet of 20-22kDa, identified as MART-1 (Melanoma Antigen Recognized by T cells 1) or Melan-A. MART-1 is a newly identified melanocyte differentiation antigen recognized by autologous cytotoxic T lymphocytes. Seven other melanoma associated antigens recognized by autologous cytotoxic T cells include MAGE-1, MAGE-3, tyrosinase, gp100, gp75, BAGE-1, and GAGE-1. Subcellular fractionation shows that MART-1 is present in melanosomes and endoplasmic reticulum. This MAb labels melanomas and other tumors showing melanocytic differentiation. It is also a useful positive-marker for angiomyolipomas. It does not stain tumor cells of epithelial, lymphoid, glial, or mesenchymal origin. Cellular Localization: Cytoplasmic.

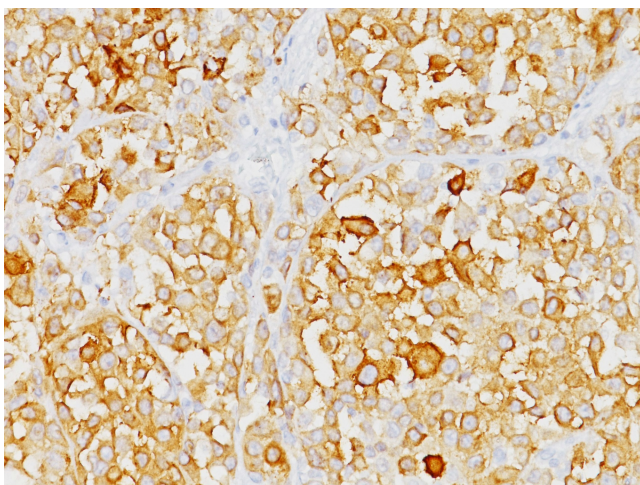


[View online »](#)

Formulation:	10mM PBS State: Purified State: Liquid purified IgG fraction from Bioreactor Concentrate Stabilizer: 0.05% BSA Preservative: 0.05% Sodium Azide
Concentration:	lot specific
Purification:	Protein A/G Chromatography
Conjugation:	Unconjugated
Storage:	Store undiluted at 2-8°C.
Stability:	Shelf life: one year from despatch.
Predicted Protein Size:	20-22 kDa (doublet)
Gene Name:	melan-A
Database Link:	Entrez Gene 2315 Human Q16655
Synonyms:	Melan-A protein, MLANA, Antigen SK29-AA, LB39-AA, MelanA, MART1

Product images:

Formalin-Paraffin Human melanoma stained with Melan-A Antibody (Clone SPM540). Note cytoplasmic staining of cells.



Formalin-Paraffin Human melanoma stained with Melan-A Antibody (Clone SPM540). Note cytoplasmic staining of cells.