

## Product datasheet for **AM50106PU-T**

### ECM1 Mouse Monoclonal Antibody [Clone ID: SPM217]

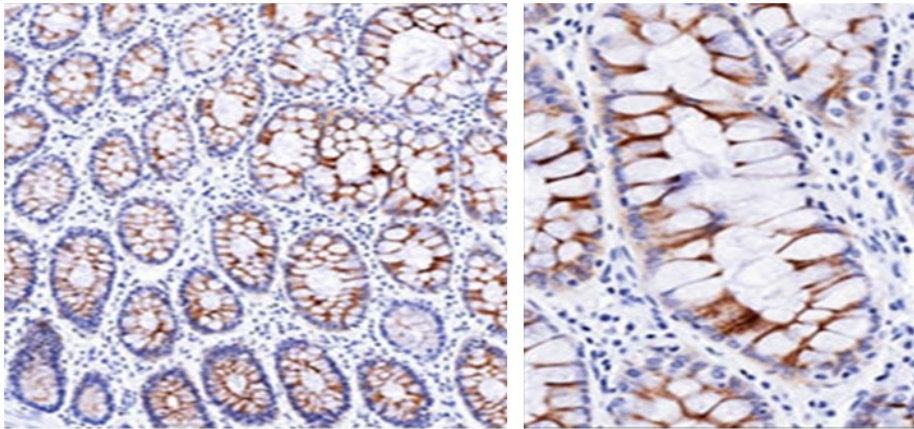
#### Product data:

Product Type:	Primary Antibodies
Clone Name:	SPM217
Applications:	FC, IF, IHC, IP, WB
Recommended Dilution:	<b>ELISA:</b> Use Antibody without BSA for Coating. <b>Flow Cytometry:</b> 0.5-1 µg/10 <sup>6</sup> cells. <b>Immunofluorescence:</b> 1-2 µg/ml. <b>Western Blot:</b> 0.5-1 µg/ml. <b>Immunoprecipitation:</b> 0.5-1 µg/500 µg protein lysate. <b>Immunohistochemistry on Frozen and Formalin-Fixed Paraffin Sections:</b> 0.5-1 µg/ml for 30 minutes at RT. Staining of formalin-fixed tissues requires boiling tissue sections in 10mM Citrate buffer, pH 6.0, for 10-20 min followed by cooling at RT for 20 minutes. <b>Positive Control:</b> Stomach, Lung, or breast tumor.
Reactivity:	Human, Rat
Host:	Mouse
Isotype:	IgG1
Clonality:	Monoclonal
Immunogen:	Secretory Component protein isolated from human colostrum.
Specificity:	This Monoclonal Antibody reacts with a reduction-resistant epitope present in both free and SIgA bound Secretory Component. It does not react with the cell lines lacking secretory component. The antibody is useful for studying the distribution and level of both free and bound secretory component. Secretory component is differentially expressed in epithelium, and the antibody is a popular marker for identifying subpopulations of epithelial cells and epithelial differentiation. The Secretory component antibody is a useful research tool for studying mucosal immunity, inflammation, remodeling, differentiation and tumorigenesis, all processes associated with differential secretory component expression. <b>Cellular Localization:</b> Cell surface and cytoplasmic.



[View online »](#)

<b>Formulation:</b>	10mM PBS State: Purified State: Liquid purified IgG fraction from Bioreactor Concentrate Stabilizer: 0.05% BSA Preservative: 0.05% Sodium Azide
<b>Concentration:</b>	lot specific
<b>Purification:</b>	Protein A/G Chromatography
<b>Conjugation:</b>	Unconjugated
<b>Storage:</b>	Store undiluted at 2-8°C.
<b>Stability:</b>	Shelf life: one year from despatch.
<b>Predicted Protein Size:</b>	~80 kDa
<b>Gene Name:</b>	extracellular matrix protein 1
<b>Database Link:</b>	<a href="#">Entrez Gene 1893 Human Q16610</a>
<b>Synonyms:</b>	Secretory component p85, Extracellular matrix protein 1

**Product images:**

Formalin-Fixed, Paraffin-Embedded normal Human small intestine stained with Secretory Component Antibody (Clone SPM217). Note cytoplasmic and membrane staining.