

## Product datasheet for **AM50105PU-T**

### alpha 1 Fetoprotein (AFP) Mouse Monoclonal Antibody [Clone ID: SPM334]

#### Product data:

Product Type:	Primary Antibodies
Clone Name:	SPM334
Applications:	FC, IF, IHC, IP, WB
Recommended Dilution:	<b>ELISA:</b> Use Antibody without BSA for Coating. <b>Flow Cytometry:</b> 0.5-1 µg/10 <sup>6</sup> cells. <b>Immunofluorescence:</b> 0.5-1 µg/ml. <b>Western Blot:</b> 0.5-1 µg/ml. <b>Immunoprecipitation:</b> 0.5-1 µg/500 µg protein lysate. <b>Immunohistochemistry on Frozen and Formalin-Fixed Paraffin Sections:</b> 0.5-1 µg/ml for 30 minutes at RT. Staining of formalin-fixed tissues requires boiling tissue sections in 10mM Citrate buffer, pH 6.0, for 10-20 min followed by cooling at RT for 20 minutes. <b>Positive Control:</b> Hep-G2 cells. Fetal liver or hepatocellular carcinoma.
Reactivity:	Canine, Human, Monkey, Porcine
Host:	Mouse
Isotype:	IgG2a
Clonality:	Monoclonal
Immunogen:	Alpha fetoprotein (AFP) purified from serum of a hepatoma patient.
Specificity:	It recognizes an oncofetal glycoprotein with a single chain of 70kDa, which is identified as alpha fetoprotein (AFP). This Monoclonal Antibody is highly specific to AFP and shows no cross-reaction with other oncofetal antigens or serum albumin. AFP is normally synthesized in the liver, intestinal tract, and yolk sac of the fetus. Antibody to AFP has been shown to be useful in detecting hepatocellular carcinomas (HCC) and germ cell neoplasms, especially yolk sac tumors. <b>Cellular Localization:</b> Cytoplasmic. <b>Negative Species:</b> Cow, Cat, Mouse, and Rat.



[View online »](#)

**Formulation:** 10mM PBS  
State: Purified  
State: Liquid purified IgG fraction from Bioreactor Concentrate  
Stabilizer: 0.05% BSA  
Preservative: 0.05% Sodium Azide

**Concentration:** lot specific

**Purification:** Protein A/G Chromatography

**Conjugation:** Unconjugated

**Storage:** Store undiluted at 2-8°C.

**Stability:** Shelf life: one year from despatch.

**Predicted Protein Size:** 70 kDa

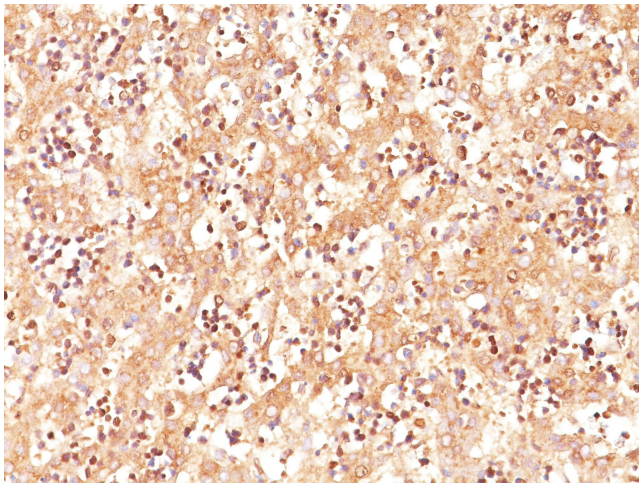
**Gene Name:** alpha fetoprotein

**Database Link:** [Entrez Gene 174 Human P02771](#)

**Background:** Alpha-Feto Protein (AFP) is a protein produced by the fetus, which is excreted into the amniotic fluid and into the mother's bloodstream through the placenta. The amount of AFP, both in the maternal's blood and in the amniotic fluid, at particular periods during the pregnancy, may be associated with the presence of neural tube defects or chromosomal problems in the baby. AFP synthesis occurs in tissues including the gut, liver and fetal yolk sac. AFP expression may be seen in germ cell neoplasma and in liver carcinoma.

**Synonyms:** Alpha-1-fetoprotein, Alpha-fetoglobulin, HPAFP

### Product images:



Formalin-Fixed, Paraffin-Embedded Human fetal liver stained with AFP Antibody (Clone SPM334).