

## Product datasheet for **AM50104PU-S**

### CD35 (CR1) Mouse Monoclonal Antibody [Clone ID: SPM554]

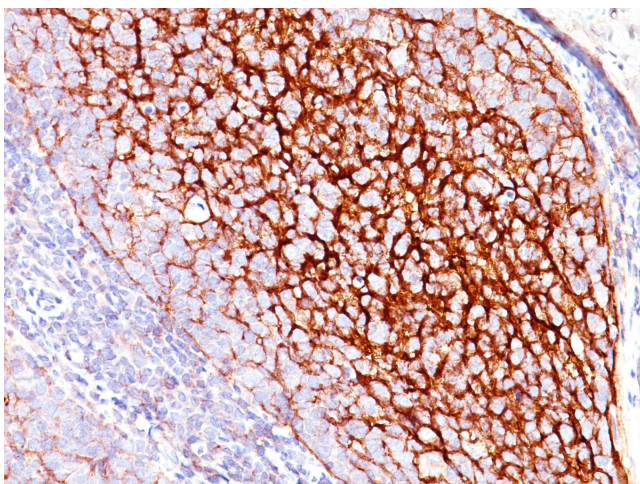
#### Product data:

Product Type:	Primary Antibodies
Clone Name:	SPM554
Applications:	FC, IF, IHC, IP, WB
Recommended Dilution:	<b>ELISA:</b> Use Antibody without BSA for Coating. <b>Flow Cytometry:</b> 0.5-1 µg/10 <sup>6</sup> cells. <b>Immunofluorescence:</b> 1-2 µg/ml. <b>Western Blot:</b> 0.5-1 µg/ml. <b>Immunoprecipitation:</b> 1-2 µg/500 µg protein lysate. <b>Immunohistochemistry on Frozen and Formalin-Fixed Paraffin Sections:</b> 0.5-1 µg/ml for 30 minutes at RT. Staining of formalin-fixed tissues requires boiling tissue sections in 10mM Citrate buffer, pH 6.0, for 10-20 min followed by cooling at RT for 20 minutes. <b>Positive Control:</b> Follicular dendritic cells (FDC) in tonsil.
Reactivity:	Baboon, Human, Monkey
Host:	Mouse
Isotype:	IgG1
Clonality:	Monoclonal
Immunogen:	Intact human monocytes.
Specificity:	Recognizes a protein of 210-220kDa, which is identified as the complement receptor 1 (CR1)/CD35. This Monoclonal Antibody is specific for a site in CR1 that is distal from the C3b-binding site, so that it is unable to block CR1 activity. This Monoclonal Antibody is highly specific to CR1 and shows no cross-reaction with CR2. The primary function of CR1 is to serve as the cellular receptor for C3b and C4b, the most important components of the complement system leading to clearance of foreign macromolecules. The Knops blood group system is a system of antigens located on this protein. Follicular dendritic cells (FDC) are restricted to the B-cell regions of secondary lymphoid follicles. They are CD21+/CD35+/CD1a-. It labels follicular dendritic cells and follicular dendritic cell sarcoma. <b>Cellular Localization:</b> Cell surface.



[View online »](#)

<b>Formulation:</b>	10mM PBS State: Purified State: Liquid purified IgG fraction from Bioreactor Concentrate Stabilizer: 0.05% BSA Preservative: 0.05% Sodium Azide
<b>Concentration:</b>	lot specific
<b>Purification:</b>	Protein A/G Chromatography
<b>Conjugation:</b>	Unconjugated
<b>Storage:</b>	Store undiluted at 2-8°C.
<b>Stability:</b>	Shelf life: one year from despatch.
<b>Predicted Protein Size:</b>	210-220 kDa
<b>Gene Name:</b>	complement component 3b/4b receptor 1 (Knops blood group)
<b>Database Link:</b>	<a href="#">Entrez Gene 1378 Human P17927</a>
<b>Synonyms:</b>	Complement receptor type 1, CR1, C3b/C4b receptor

**Product images:**

Formalin-Fixed, Paraffin-Embedded Human tonsil stained with CD35/C3BR Antibody (Clone SPM554).