

Product datasheet for **AM50103PU-S**

Chromogranin A (CHGA) Mouse Monoclonal Antibody [Clone ID: SPM585]

Product data:

Product Type:	Primary Antibodies
Clone Name:	SPM585
Applications:	FC, IF, IHC, IP, WB
Recommended Dilution:	ELISA: Use Antibody without BSA for Coating. Flow Cytometry: 0.5-1 µg/10 ⁶ cells. Immunofluorescence: 0.5-1 µg/ml. Western Blot: 0.5-1 µg/ml. Immunoprecipitation: 0.5-1 µg/500 µg protein lysate. Immunohistochemistry on Frozen and Formalin-Fixed Paraffin Sections: 0.5-1 µg/ml for 30 minutes at RT. Staining of formalin-fixed tissues requires boiling tissue sections in 10mM Citrate buffer, pH 6.0, for 10-20 min followed by cooling at RT for 20 minutes. Positive Control: PC12 cells. Adrenal gland, bowel, thyroid, pancreas, or pheochromocytoma.
Reactivity:	Human, Monkey
Host:	Mouse
Isotype:	IgG1
Clonality:	Monoclonal
Immunogen:	Human pheochromocytoma.
Specificity:	Recognizes Chromogranin A. Cellular Localization: Finely granular cytoplasmic. Negative Species: Mouse, Rat.
Formulation:	10mM PBS State: Purified State: Liquid purified IgG fraction from Bioreactor Concentrate Stabilizer: 0.05% BSA Preservative: 0.05% Sodium Azide
Concentration:	lot specific
Purification:	Protein A/G Chromatography
Conjugation:	Unconjugated



[View online »](#)

Storage: Store undiluted at 2-8°C.

Stability: Shelf life: one year from despatch.

Predicted Protein Size: 68-75 kDa

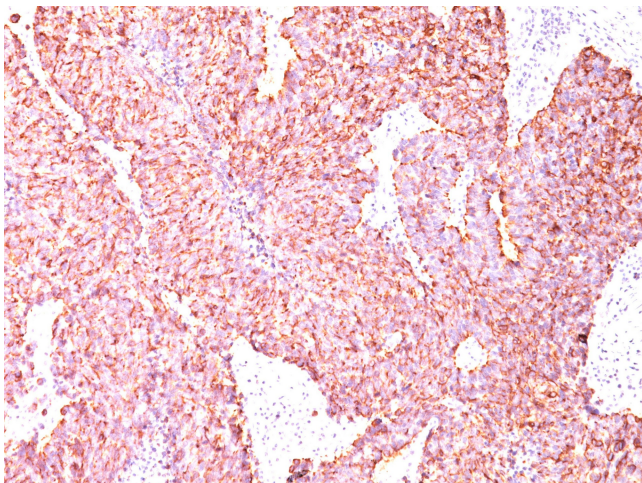
Gene Name: chromogranin A

Database Link: [Entrez Gene 1113 Human P10645](#)

Background: Chromogranin A is present in neuroendocrine cells throughout the body, including the neuroendocrine cells of the large and small intestine, adrenal medulla and pancreatic islets. It is an excellent marker for carcinoid tumors, pheochromocytomas, paragangliomas, and other neuroendocrine tumors. Co-expression of chromogranin A and neuron specific enolase (NSE) is common in neuroendocrine neoplasms. Reportedly, coexpression of certain keratins and chromogranin indicates neuroendocrine lineage. The presence of strong anti-chromogranin staining and absence of anti-keratin staining should raise the possibility of paraganglioma. The co-expression of chromogranin and NSE is typical of neuroendocrine neoplasms. Most pituitary adenomas and prolactinomas readily express chromogranin.

Synonyms: Chromogranin-A, CgA, CHGA, SP-I

Product images:



Formalin-Fixed, Paraffin-Embedded small cell lung carcinoma stained with Chromogranin A Antibody (Clone SPM585).