

## Product datasheet for **AM50099PU-T**

### **hCG beta (CGB3) Mouse Monoclonal Antibody [Clone ID: SPM529]**

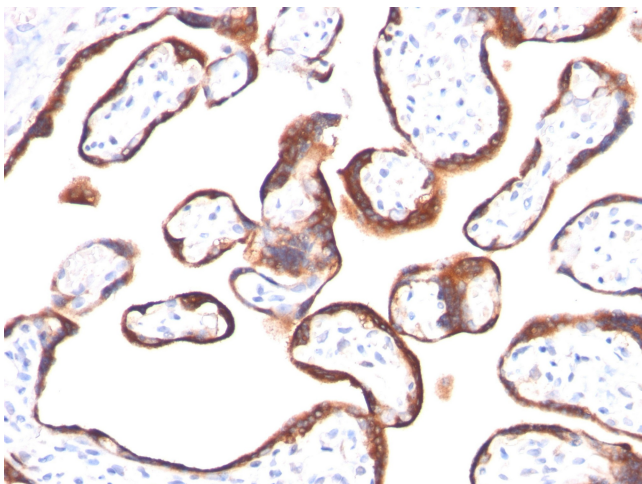
#### **Product data:**

|                       |   |
|-----------------------|---|
| Product Type:         | Primary Antibodies  |
| Clone Name:           | SPM529  |
| Applications:         | IHC, WB   |
| Recommended Dilution: | <b>ELISA:</b> For coating, order Ab without BSA.<br><b>Western Blot:</b> 0.5-1 µg/ml.<br><b>Immunohistochemistry on Frozen and formalin-Fixed Paraffin Sections:</b> 0.5-1 µg/ml for 30 min RT.<br>Staining of formalin-fixed tissues requires boiling tissue sections in 10mM citrate buffer, pH 6.0, for 10-20 min followed by cooling at RT for 20 minutes.<br><b>Positive Control:</b> Placenta.  |
| Reactivity:           | Human   |
| Host:                 | Mouse   |
| Isotype:              | IgG1  |
| Clonality:            | Monoclonal  |
| Immunogen:            | Recombinant hCG beta protein.   |
| Specificity:          | This Monoclonal Antibody reacts with a protein of 22kDa, identified as beta sub-unit of HCG. It does not cross react with the alpha subunit. HCG is a glycoprotein, which is secreted in large quantities by normal trophoblasts. It is present only in trace amounts in non-pregnant urine and sera but rises sharply during pregnancy. HCG is composed of two non-identical, non-covalently linked polypeptide chains designated as the $\alpha$ and $\beta$ subunits. The $\alpha$ subunit is identical to that of thyroid stimulating hormone (TSH), follicle stimulating hormone (FSH), and luteinizing hormone (LH).<br>hCG Monoclonal Antibody detects cells and tumors of trophoblastic origin such as choriocarcinoma. Large cell carcinoma and adenocarcinoma of the lung demonstrate anti-hCG positivity in 90% and 60% of cases respectively. 20% of lung squamous cell carcinomas are positive. hCG expression by non-trophoblastic tumors may indicate aggressive behavior.<br><b>Cellular Localization:</b> Cytoplasmic, secreted. |



[View online »](#)

|                                |   |
|--------------------------------|---|
| <b>Formulation:</b>            | 10mM PBS<br>State: Purified<br>State: Liquid purified IgG fraction from Bioreactor Concentrate<br>Stabilizer: 0.05% BSA<br>Preservative: 0.05% Sodium Azide |
| <b>Concentration:</b>          | lot specific  |
| <b>Purification:</b>           | Protein A/G Chromatography  |
| <b>Conjugation:</b>            | Unconjugated  |
| <b>Storage:</b>                | Store undiluted at 2-8°C.   |
| <b>Stability:</b>              | Shelf life: one year from despatch.   |
| <b>Predicted Protein Size:</b> | 22 kDa  |
| <b>Gene Name:</b>              | chorionic gonadotropin beta subunit 3   |
| <b>Database Link:</b>          | <a href="#">Entrez Gene 1082 Human</a><br><a href="#">P0DN86</a>  |
| <b>Synonyms:</b>               | Choriogonadotropin subunit beta, CGB, CGB3, beta hCG, hCG-beta  |

**Product images:**

Formalin-Fixed, Paraffin-Embedded Human Placenta stained with hCG beta Antibody (Clone SPM529). Note specific membrane staining.