

## Product datasheet for **AM50097PU-S**

### **hCG (CGA) Mouse Monoclonal Antibody [Clone ID: SPM552]**

#### **Product data:**

|                         |  |
|-------------------------|--|
| Product Type:           | Primary Antibodies   |
| Clone Name:             | SPM552   |
| Applications:           | IHC, WB  |
| Recommended Dilution:   | <b>ELISA:</b> Use BSA free Antibody for coating.<br><b>Western Blotting:</b> 0.5-1 µg/ml.<br><b>Immunohistochemistry on Formalin-Fixed Paraffin Sections:</b> 0.5-1 µg/ml for 30 minutes at RT.<br>Staining of formalin-fixed tissues requires boiling tissue sections in 10mM citrate buffer, pH 6.0, for 10-20 min followed by cooling at RT for 20 minutes.<br><b>Positive Control:</b> Placenta. |
| Reactivity:             | Human  |
| Host:                   | Mouse  |
| Isotype:                | IgG1   |
| Clonality:              | Monoclonal   |
| Immunogen:              | Recombinant hCG alpha protein.   |
| Specificity:            | This MAb reacts with a protein of ~13kDa, identified as alpha sub-unit of HCG.<br><b>Cellular Localization:</b> Cytoplasmic, secreted.   |
| Formulation:            | 10mM PBS<br>State: Purified<br>State: Liquid purified IgG fraction from Bioreactor Concentrate<br>Stabilizer: 0.05% BSA<br>Preservative: 0.05% Sodium Azide  |
| Concentration:          | lot specific   |
| Purification:           | Proten A/G Chromatography  |
| Conjugation:            | Unconjugated   |
| Storage:                | Store undiluted at 2-8°C.  |
| Stability:              | Shelf life: one year from despatch.  |
| Predicted Protein Size: | ~13 kDa  |



[View online »](#)

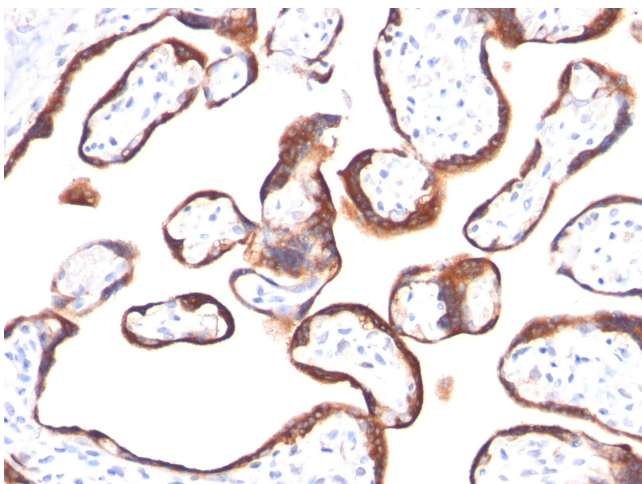
**Gene Name:** glycoprotein hormones, alpha polypeptide

**Database Link:** [Entrez Gene 1081 Human P01215](#)

**Background:** HCG is a glycoprotein, which is secreted in large quantities by normal trophoblasts. It is present only in trace amounts in non-pregnant urine and sera but rises sharply during pregnancy. HCG is composed of two non-identical, non-covalently linked polypeptide chains designated as the  $\alpha$  and  $\beta$  subunits. The  $\alpha$  subunit is identical to that of thyroid stimulating hormone (TSH), follicle stimulating hormone (FSH), and luteinizing hormone (LH).

**Synonyms:** Follitropin alpha chain, Follicle-stimulating hormone alpha chain, FSH-alpha, Lutropin alpha chain, Luteinizing hormone alpha chain, LSH-alpha, LH alpha, Thyrotropin alpha chain, Thyroid-stimulating hormone alpha chain, TSH-alpha, Choriogonadotropin alpha chain, Chorionic gonadotrophin subunit alpha, hCG-alpha

### Product images:



Formalin-Fixed, Paraffin-Embedded Human placenta stained with hCG alpha Antibody (Clone SPM552). Note specific membrane staining.